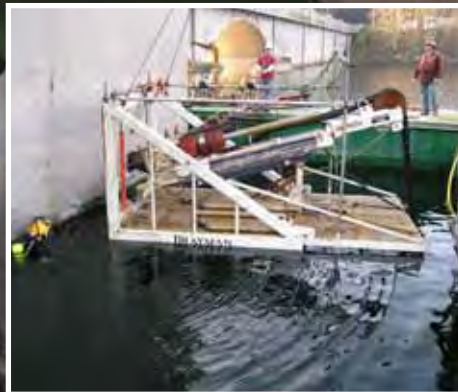


ASDSO Directory of

Industry Resources



A Century of Dam Engineering Solutions



Gilboa Dam Rehabilitation
Schoharie County, New York



Gannett Fleming

100 Years

of Excellence Delivered As Promised

#GannettFleming100

Paul G. Schweiger, PE, CFM • pschweiger@gfnet.com • 800.233.1055
www.gannettfleming.com • Offices Worldwide

ISO 9001:2008
CERTIFIED

Table of Contents

Directory of Industry Contacts	3
Services.....	17
Products.....	28
Companies By State.....	33
How to Procure the Services of an Engineer	66

ASDSO, including its employees and agents, assumes no responsibility for consequences resulting from the use of the information herein. ASDSO disclaims all liability for damages of any kind arising from use, reference to or reliance upon such information. No guarantees or warranties, including but not limited to any express or implied warranties of merchantability for a particular purpose, are made by ASDSO with respect to such information.

The companies in bold and italics are ASDSO Sustaining Members.

COVER PHOTOS

Middle: Photo of Custom-Modified Core Drill (Provided by Brayman Construction & Irfan Alvi, P.E.)

Left: Twolick Dam, Clarksburg, WV (Provided by Paul Schweiger, P.E.)

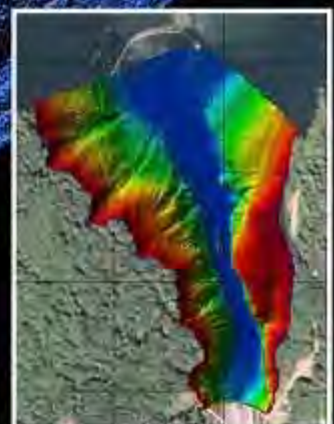
SPECIALTY SECTION

This is an alphabetical index to help you locate a company that offers these particular services and products.

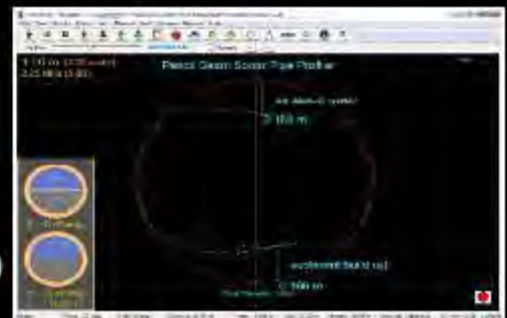
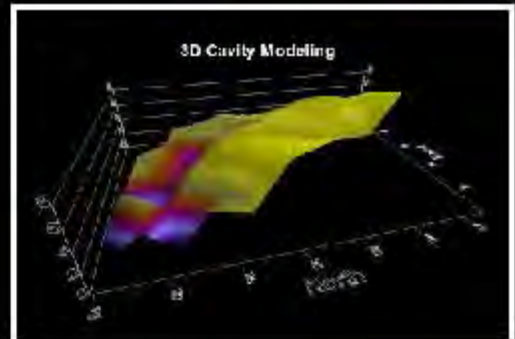
COMPANIES BY STATE

This section is designed to help you locate a company that works in your state.

Providing Hydrographic Imaging, Inspection & Survey



- Video Inspection
- Sidescan Survey
- Multibeam Sonar
- Bathymetric/Lidar Survey
- 3D Photogrammetry
- Sub Bottom Profiling
- UT Thickness Measuring
- Long Distance Pipe Profiling
- 3D Modeling



Booth 223

www.pro-rov.com • 619-300-0540

DIRECTORY OF INDUSTRY CONTACTS

AECOM

Contact: Lea Anne Russell
8181 E. Tufts Ave.
Denver, CO 80237 US
(303) 740-2796
Lea.Anne.Russell@aecom.com
www.aecom.com

AECOM offers a wide range of planning, design, and program and construction management services, with nearly 100,000 employees serving clients in more than 150 countries. The recent incorporation of URS accelerates our vision to become the world's premier fully integrated infrastructure firm.

Across all components of the in-project cycle — design, build, finance and operate, AECOM is a leader in dam and levee services. The firm's experience covers the full range of dam safety activities including risk assessments, dam inspections, dam safety analysis, dam rehabilitation design and construction, environmental impact studies, and permitting. AECOM has supported the advancement of dam safety technology by organizing and presenting numerous ASDSO-sponsored training courses and workshops, including emergency action planning, seepage, and slope stability.

Amec Foster Wheeler

Contact: Larry Sample
100 SE 9th St. STE 400
Topeka, KS 66612 US
(785)272-6830
FAX: (785) 272-6820
larry.sample@amecfw.com
www.amecfw.com

Andrzejewski Engineering

Contact: Stephen Andrzejewski
129 Military Hwy.
Gales Ferry, CT 06335-1820 US
(860) 464-7819
STAndrzejewski@sbcglobal.net

Applied Weather Associates, LLC

Contact: Bill Kappel
PO Box 175
Monument, CO 80132 US
(719) 488-4311
billkappel@appliedweatherassociates.com
www.appliedweatherassociates.com

ASI Constructors, Inc.

Contact: Del Shannon
1850 E Platteville Blvd.
Pueblo West, CO 81007 US
(719) 647-2821
FAX: (719) 647-2890
dshannon@asiconstructors.com
www.asiconstructors.com



ASI Constructors, Inc. (ASI) is a self-performing, heavy-civil contractor specializing in the construction and rehabilitation of dams, hydroelectric and renewable energy facilities, pipelines, and other major water resource projects.

ASI provides our clients innovative and cost-effective solutions to their complex projects. Sophisticated engineering and construction technologies, an honest commitment to fair business dealings along with a partnering approach to our work, and a genuine culture of safety and quality management are the

foundations that we build on in all of our projects.

ASI maintains an operations-driven focus where performance defines success in all aspects of our business.

Aubian Engineering Inc.

Contact: Frederick (Rick) Lux
619 Menomonie Street
Eau Claire, WI 54702-0925 US
(715) 864-9900
flux@aubianeng.com
www.aubianeng.com

Avanti International

Contact: Charlie Lerman
1100 Hercules Ave., Suite 320
Houston, TX 77058 US
(281) 486-5600
FAX: (281) 486-7300
charlie.lerman@avantigrout.com
www.avantigrout.com

Barnard Construction Company, Inc.

Contact: Aaron Rietveld
P.O. Box 99
Bozeman, MT 59771 US
(406) 586-1995
FAX: (406) 586-3530
aaron.rietveld@barnard-inc.com
www.barnard-inc.com

Barnard's people are the reason for our 40 years of success in tackling complex and logistically challenging heavy-civil construction projects. With no debt, cash strong, and a bonding capacity of over \$1.5 billion, our privately held company can take on complicated projects under a variety of contract types. Barnard specializes in dam, reservoir and hydropower construction and rehabilitation, power transmission

and distribution, tunneling, inland marine, oil, gas, utility, and sewer and water pipeline projects. Our reputation attracts the highest quality personnel, people who are committed to producing projects that set a standard for safety and excellence. Our approach to work and commitment to Partnering allow for quick issue recognition and resolution.

Barr Engineering Co.

Contact: Richard Ver Strate
 4700 W 77th Street
 Minneapolis, MN 55435 US
 (952) 832-2600
 FAX: (952) 832-2601
 rverstrate@barr.com
 www.barr.com

BDI

Contact: Katie Lewis
 1995 57th Court North
 Suite 100
 Boulder, CO 80301 US
 (303) 494-3230
 FAX: (303) 494-5027
 katie@bridgetest.com
 www.bridgetest.com

Brayman Construction

Contact: Brian Hawk
 1000 John Roebling Way
 Saxonburg, PA 16056 US
 (724) 443-1533
 FAX: (724) 443-8733
 b_hawk@brayman.com
 www.brayman.com

Canary Systems, Inc.

Contact: Martin van Balkom
 5 Gould Road
 New London, NH 03257 US
 (603) 526-9800
 martin@canarysystems.com
 www.canarysystems.com

CARPI USA Inc

Contact: Debbie Freeman
 4370 Starkey Road
 Suite 4D
 Roanoke, VA 24018 US
 (540) 776-7727
 FAX: (540) 776-7724
 carpifreeman@aol.com
 www.carpitech.com

Since 1963, the CARPI Group has specialized in waterproofing of hydraulic structures including dams, canals, hydraulic tunnels, reservoirs, and intake structures

CELEBRATING 20 YEARS
 MORE THAN 225 GATES DELIVERED

MECANHYDRO
 BUILD ON A SURE THING!

MECANHYDRO.COM

660 du Luxembourg
 Granby, QC J2J 2V2
 Canada

450-776-7921

DESIGN... MANUFACTURING... INSTALLATION

<p>Gates</p> <ul style="list-style-type: none"> Fixed wheel (Roller gate) Slide gate Crest (Bottom hinged flap gate) Bulkhead (Stop log) Radial gate (Tainter) Floating bulkhead gate 	<p>Operating systems</p> <ul style="list-style-type: none"> Wire rope hoist Hydraulic hoist Screw actuator hoist Rack and pinion hoist Monorail hoist Gantry Crane (Log lifter) Follower beam (Lifting beam) 	<p>Trash Racks</p> <ul style="list-style-type: none"> Thermoplastic Trash rack Steel Trash rack <p>Trash Rakes</p> <ul style="list-style-type: none"> Hydraulic Trash Rake 100% Electric Trash Rake <p>Rubber dams</p> <ul style="list-style-type: none"> Steel structure
--	--	---

with flexible impermeable geomembranes. Carpi patented systems are used for rehabilitation (gravity, arch, multiple-arch, embankment, RCC dams), for new construction (embankment, RCC dams, and cofferdams) as well as for underwater repair. The company provides design, supply, and installation, with full comprehensive warranty, and has completed more than 130 dams.

CDM Smith

Contact: Stephen L. Whiteside, P.E.
5400 Glenwood Avenue
Suite 400
Raleigh, NC 27612 US
(919) 325-3500
FAX: (919) 781-5730
whitesidesl@cdmsmith.com
www.cdmsmith.com

CDM Smith

As a full-service engineering and construction firm, CDM Smith delivers exceptional client service, quality results and enduring value across the entire project life cycle. With more than 5,000 professionals in over 100 offices worldwide, CDM Smith maintains a global network of offices and affiliations. Our multi-disciplined staff provides our clients with an integrated services approach to meet each project's specific needs. CDM Smith has extensive experience in providing engineering services for water supply dams, flood control dams and levees, water management structures, hydroelectric power dams, and ecosystem restoration. We are a leader in providing

innovative, sustainable solutions, including safety inspections for dams and levees; embankment and RCC dam design; planning and permitting; emergency action plans; and construction management.

Center Rock Inc.

Contact: Joe McKenzie
118 Schrock Drive
Berlin, PA 15530 US
(814) 267-7100 X119
(814) 267-6382
jmckenzie@centerrock.com
www.centerrock.com



Center Rock Inc. is the US distributor of Wassara Water Hammers. The Wassara technology uses water to power the down-the-hole (DTH) percussion hammer. This makes it the ideal choice for most drilling applications where air-powered DTH hammer, top hammer or core drilling equipment are normally used.

The heart of the Wassara drilling system is the world patented water-powered DTH hammer. The use of water for transmitting the power to the hammer brings numerous key benefits such as: long straight, clean and stable holes; high drilling performance; safe and benign drilling; environmentally friendly and cost effective drilling.

Civil Dynamics

Contact: Christopher S. Adams
109A Route 515
PO Box 760
Stockholm, NJ 07460-0760 US
(973) 697-3496
FAX: (973) 697-1678
cadams@civildynamics.com
www.civildynamics.com

CME Engineering

Contact: Greg Walker
975 Georges Station Rd
Greensburg, PA 15601 US
(724) 672 4800
FAX: (724) 672-4801
greg.walker@cmemgmt.com
www.cmemgmt.com



COH Inc.

Contact: Rob Vanderbeck
3917 River Road
Reading, PA 19605 US
(610) 223-7387
FAX: (610) 929-0349
rvanderbeck@coh.ca
www.coh.ca

D'Appolonia

Contact: Kevin Edwards
275 Center Road
Monroeville, PA 15146 US
(800) 856-9440
FAX: (412) 856-9535
ktedwards@dappolonia.com
www.dappolonia.com

Dewberry

Contact: Jeff Cowan
13575 Heathcote Boulevard,
Suite 130
Gainesville, VA 20155 US
(703) 468-2243
FAX: (703) 468-2212
jcowan@dewberry.com
www.dewberry.com



DOWL

Contact: Jason Thom
222 N. 32nd Street
Suite 700
Billings, MT 59101 US
(406) 656-6399
FAX: (406) 656-6398
jthom@dowl.com
www.dowl.com



DOWL, formerly DOWL HKM, is a multi-disciplined engineering firm that has provided services throughout the western United States for nearly 60 years. DOWL is over 400 employees strong with 25 offices spread throughout Alaska, Arizona, Colorado, Montana, North Dakota, Oregon, Washington, and Wyoming. Our dam safety capabilities include safety inspections, hazard evaluations, risk analyses, design, and construction administration. DOWL has expertise in hydraulics and hydrology, structural engineering, geotechnical engineering, geology,

environmental planning and compliance, construction services, materials testing, surveying, GIS, water rights, stream and wetland mitigation, and many other services.

Dyrhoff Inc.

Contact: Don Mason
354 West Boylston St, Suite 222
West Boylston, MA 01583 US
(508) 755-6662
FAX: (800) 672-6960
donmason@dyrhoff.co.uk
www.dyrhoff.com

Dyrhoff has over 25 years of experience in the design and supply of inflatable rubber dams. Dyrhoff rubber dams can reach up to 6.5m in height and 100m in length. Rubber dams are virtually maintenance free structures,



HYDROPOWER LIFTING SPECIALISTS

45 years

COH Inc.

DESIGN - FABRICATION - TURNKEY INSTALLATION

- ✓ Fixed hoists, cranes, gantries and gates for intakes, draft tubes and spillways
- ✓ Rack & pinion gate lifters
- ✓ Spiral drum link and roller chain hoists
- ✓ Electrical and mechanical modernizations
- ✓ Powerhouse cranes
- ✓ Gantries and monorails for stop logs



COH Inc. 800 363-6501 / USA: 610 223-7387
sales@coh.ca / www.coh.ca



with no moving parts and no painting required, and are clean in operation as no lubricants are required. Applications include hydropower, flood management, irrigation and tidal water control. Dyrhoff also specialise in the replacement of Fabridam and Bridgestone inflatable dams that have reached the end of their working life. Whatever your project, we will offer the best solution.

**DYWIDAG Systems
International
(DSI)**

Contact: Ken Purinton
320 Marmon Drive
Bolingbrook, IL 60440 US
(630) 739-1100
FAX: (630) 739-5517
dsiamerica@dsiamerica.com
www.dsiamerica.com

**Earth Reinforcement Testing,
Inc.
(ERTesting)**

Contact: Kenneth L. Fishman, Ph.D.,
P.E.
2495 Main Street
Suite 432
Buffalo, NY 14214 US
(716) 984-1633
FAX: (716) 834-8934
kfishman@mmce.net
www.ertesting.com

Emagineered Solutions, Inc.

Contact: Ross Huckfeldt
527 NW Elm Ave
Suite 3-405
Redmond, OR 97756 US
(541) 504-0416
FAX: (541) 504-0417
ross.h@emagineered.com
www.emagineered.com



Emagineered Solutions is the industry leader for water leakage control in concrete gravity dams. We are the innovative company owners and managers utilize for joint leakage in the hydro industry. Beginning in the late 1970's our founder Steve Waring realized the need for a workable design in new and remedial monolith joint waterstops and in 2006 commercialized the proprietary CYLutions™ system. Subsequently Emagineered has provided long lasting waterstop repairs in many dams, some with heads exceeding 350 feet. For dam owners and industry professionals dealing with leaking joints in concrete gravity dams and navigation locks, CYLutions™ is the proven answer.

Engineered Restorations, Inc.

Contact: Chris R. Hayno
225 Buford Drive
Suite A
Lawrenceville, GA 30046 US
(770) 682-0650
FAX: (770) 682-0403
chayno@er-inc.net
www.er-inc.net

FENSTERMAKER

Contact: Ken LaBry
135 Regency Square
Lafayette, LA 70508 US
(337) 237-2200
FAX: (337) 232-3299
kenl@fenstermaker.com
www.fenstermaker.com

Flo-2D Software, Inc.

P.O. Box 66
Nutrioso, AZ 85932 US
(928) 339-1935
contact@flo-2d.com
www.flo-2d.com



Fugro Consultants Inc.

6100 Hillcroft Ave.
Houston, TX 77081 US
(888) 241-6615
inquiries@fugro.com
www.fugroconsultants.com

Fuss & O'Neill, Inc.

Contact: Kathy Nanowski
146 Hartford Rd.
Manchester, CT 06040 US
(860) 646-2469 x5283
knanowski@fando.com
www.fando.com

Gannett Fleming, Inc.

Contact: Rod Holderbaum, P.E.
207 Senate Avenue
Camp Hill, PA 17011
(717) 763-7211
rholderbaum@gfnet.com
www.gannettfleming.com



Gannett Fleming, Inc. has been a recognized leader in engineering

for dams for 100 years and provides engineering services from 60 offices worldwide. Our projects include more than 100 new dams, modifications of more than 500 existing dams, more than 20 levee projects, and safety evaluations of more than 1,000 dams. We have experience with earthfill, rockfill, concrete gravity, slab and buttress, movable crest and arch dams, and RCC structures. We have won three ASDSO National Dam Rehabilitation Awards in the past 15 years. Our services include:

- investigations
- inspections
- analyses and design
- hydrology and hydraulics
- outlet works inspections
- geotechnical investigations
- FERC Part 12 inspections

- environmental studies/ permitting
- rehabilitation
- design build
- fish passage
- risk analyses

Gomez and Sullivan Engineers, DPC

Contact: Jerry Gomez
 288 Genesee St
 Utica, NY 13502 US
 (315) 724-4860
 FAX: (315) 724-4862
 jgomez@gomezandsullivan.com
 www.gomezandsullivan.com



Gomez and Sullivan Engineers, DPC is an industry leader in dam safety analysis and design. Our professional staff have

participated in the inspection, analysis, design, and construction of well over 100 dams ranging in size from structures that are a few feet high to earthen embankment dams up to 770 feet high. We have worked on a wide variety of dam configurations such as earth embankment, concrete, masonry, timber crib, steel, Ambursen, and composite sections. Our company and staff are active and well respected in the dam safety community, and have been for over 30 years.

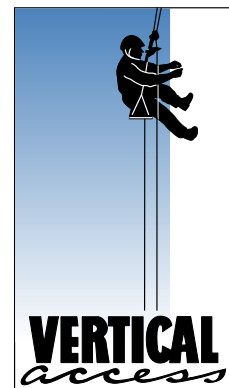
Hayward Baker Inc.

Contact: Jim Hussin
 7550 Teague Road
 Suite 300
 Hanover, MD 21076 US
 (410) 551-8200
 FAX: (410) 799-3786
 info@haywardbaker.com
 www.haywardbaker.com



Specialized Inspection and Testing Services in Extreme Locations

- Inspection, testing and condition surveys
- Documentation and quantification of faults
- Installation of structural monitoring instrumentation
- Extensive expertise in historic concrete and stone masonry
- Fall protection consulting
- Industrial rope access SPRAT Level III rigging and supervision
- Difficult access consulting
- Materials sampling and coring



Kent Diebolt • vertical-access.com • kent@vertical-access.com • (t) 607.257.4049 • (c) 607.227.3366

HDR

Contact: Keith Ferguson, P.E., D.WRE,
V.P.
1670 Broadway
Suite 3400
Denver, CO 80202-4824 US
(303) 764-1546
keith.ferguson@hdrinc.com
www.hdrinc.com



We specialize in engineering, architecture, environmental and construction services. While we are most well-known for adding beauty and structure to communities through high performance buildings and smart infrastructure, we provide much more than that. We create an unshakable foundation for progress because our multidisciplinary teams include experts in dams, levees, hydraulic structures and risk assessment. Our employees, working in 225 locations around the world, push open the doors to what's possible each and every day. This is where great begins.

Henley-Johnston & Associates, Inc.

Contact: John W. Johnston
235 Morgan Avenue
Dallas, TX 75203-1025 US
(214) 941-3808
FAX: (214) 943-7645
jjohnston@hja-eng.com
www.hja-eng.com

Hutton Construction

Contact: Anthony E. Recchia, Jr.
41 Village Park Road
Cedar Grove, NJ 07009 US
(973) 857-2501
FAX: (973) 857-7047
hutton@hutton1.com
www.hutton1.com

hydroGEOPHYSICS Inc.

Contact: Shawn Calendine
2302 N. Forbes Blvd
Tucson, AZ 85745 US
(520) 647-3315
FAX: (520) 647-3428
scalendine@HGIworld.com
hgileakdetection.com

Hydroplus, Inc.

Contact: Hasan Kocahan
500 Harbour Place Dr.
Ste 1211
Tampa, FL 33602 US
(813) 223-3081
hkocahan@hydroplususa.com
www.hydroplus.com

Hydroplus is the developer of the Fusegate System, an ideal application that offers highly flexible and versatile solutions for both existing and new dams. Implemented over 30 countries across five continents since 1991, the Fusegate System; allows for cost-efficient and safe modifications to undersized spillways bringing them up to modern standards without any loss in storage capacity and with a reliability degree equivalent to that of an uncontrolled spillway. The system can also provide additional live storage to dams without any impact on the ability of their spillways to pass the inflow design flood.

International Erosion Control Systems

Contact: David Fairley
3030 N. Rocky Point Drive
Tampa, FL 33607 US
(855) 768-1420
FAX: (855) 768-1425
dfairley@iecusa.com
www.iecsusa.com

Kleinfelder

Contact: Stephen Brown
1801 California St.
Suite 1100
Denver, CO 80202 US
(303) 237-6601
FAX: (303) 237-6602
SBrown@Kleinfelder.com
www.Kleinfelder.com

Kleinfelder, Inc. is a team of engineers, scientists, and architects providing solutions to meet our world's complex infrastructure and natural resource challenges. Kleinfelder was founded in 1961 and has grown and developed steadily to become one of the largest employee-owned engineering companies with 2,000 professionals in 60 offices worldwide. We provide services for the entire life-cycle of diverse water storage and conveyance facilities, including planning, feasibility studies, dam and levee safety inspections, FERC Part 12 inspections, alternatives analyses, new and remedial design, construction management and quality control, risk assessment, operations, and FERC re-licensing support.

Lemke Industrial Machine LLC

Contact: Dave Pflieger
1204 County Road NN
Marathon, WI 54448 US
(715) 842-3221
FAX: (715) 848-7192
sales@lemkeindustrial.com
www.lemkeindustrial.com

McCormick Taylor

Contact: Eric J. Ditchey, P.E.
700 East Gate Drive, Suite 201
Mount Laurel, NJ 08054 US
(856) 793-0800
FAX: (856) 793-0819
ejditchey@mccormicktaylor.com
www.mccormicktaylor.com

McMahon & Mann Consulting Engineers, P.C.

Contact: Michael J. Mann, P.E. or
Donald R. McMahon, P.E.
2495 Main Street
Suite 432
Buffalo, NY 14214 US
(716) 834-8932
FAX: (716) 834-8934
mmce@mmce.net
www.mmce.net

Mead & Hunt, Inc.

Contact: Carson Mettel, PE
2440 Demming Way
Middleton, WI 53562 US
(608) 273-6380
carson.mettel@meadhunt.com
www.meadhunt.com

Mecan-Hydro

Contact: Philippe Dufresne
660 Luxembourg
Granby, QC J2J 2V2 CA
(450) 776-7921
FAX: (450) 776-7922
p.dufresne@mecanhydro.com
www.mecanhydro.com



Mecan-Hydro designs, manufactures and installs the most comprehensive line of hydropower mechanical equipment, including: steel gates, hoists, steel and thermoplastic trash racks, trash raking systems, gantry cranes

MORETRENCH

No one has seen more.™

The experience, expertise and resources for all your dam remediation geotechnical challenges.

Deep wells, wellpoints, relief wells & ejector systems

High capacity dam anchors

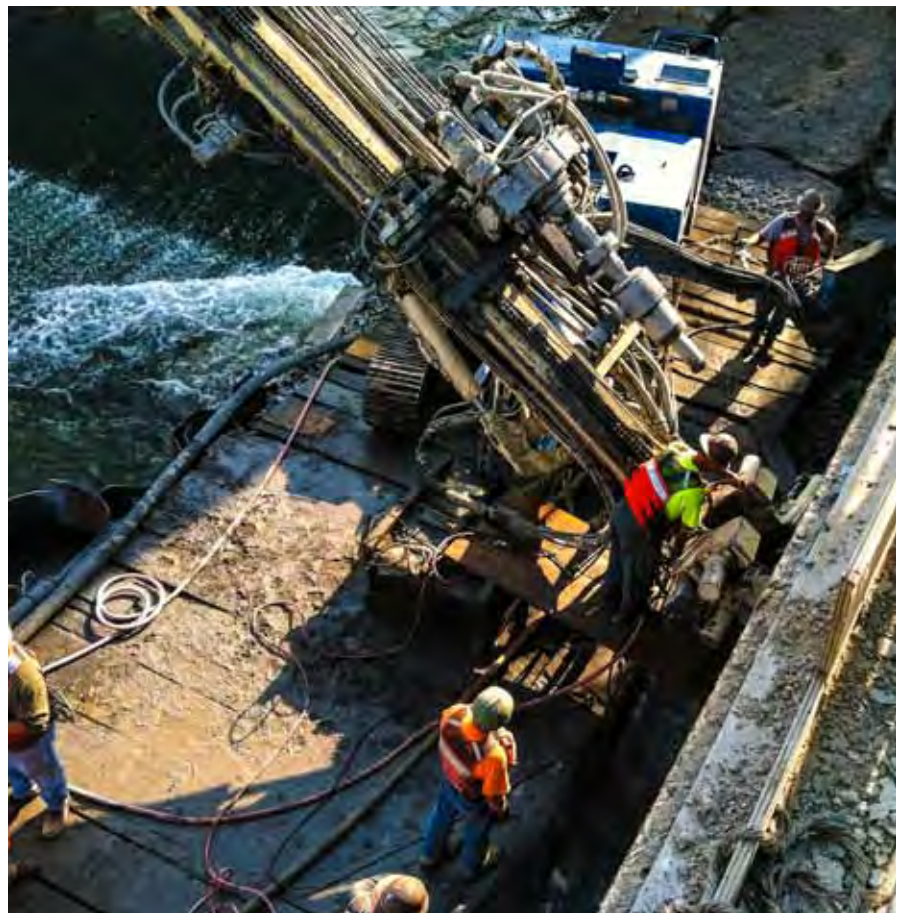
Curtain, permeation, compaction, jet, rock & void grouting

Tieback & tiedown anchors

Conduit filters & toe drains

Excavation support systems for ancillary works

412-793-9303
www.moretrench.com



and other mechanical systems. Mecan-Hydro also distributes the German made Rubber Dam from Floecksmuhle / Continental.

Michael Baker International

Contact: Chad R. Davis
Airsides Business Park
100 Airside Drive
Moon Township, PA 15108 US
(412) 375-3077
FAX: (412) 375-3995
cdavis@mbakerintl.com
www.mbakerintl.com

Moretrench

Contact: Scott Dodds
144 Dexter Drive
Monroeville, PA 15146 US
(412) 793-9303
FAX: (412) 793-9313
sdodds@mtac.com
www.moretrench.com



No one has seen more.™

Moretrench is a nationally recognized leader in geotechnical construction, specializing in site-specific design build solutions to meet project objectives and subsurface conditions. We have the experience, expertise and resources to resolve a wide range of dam-related challenges, and the emergency response capability for fast remediation of unanticipated conditions. Our technologies include construction dewatering, high capacity dam anchors, under-dam seepage cut-off, foundation and embankment improvement, slide and overturning stabilization, conduit filter and toe-drain installation, and sinkhole stabilization.

From strategic regional offices around the country, our seasoned management and field personnel are ready to deliver the remediation and rehabilitation services you need for your next dam project.

Mueser Rutledge Consulting Engineers

Contact: Francis J. Arland
14 Penn Plaza, 225 W. 34th Street
New York, NY 10122 US
(917) 339-9300
FAX: (917) 339-9400
farland@mrce.com
www.mrce.com

OBG

Contact: Robert Bowers
Brentwood Campus
301 E. Germantown Pike, 3rd Fl
East Norriton, PA 19401
(484) 804-7200
Fax: (215) 628-9953
robert.bowers@obg.com
www.obg.com

Parsons Brinckerhoff

Contact: Matthew Chan
400 SW 6th Ave
Suite 802
Portland, OR 97204 US
(503) 478-2861
chanm@pbworld.com
www.pbworld.com



Parsons Brinckerhoff is a national professional engineering and dam safety service provider successfully serving dam, levee and hydropower owners and developers. Our capabilities include dam safety, condition assessment, dam remediation, feasibility studies, preliminary

and detailed civil/structural/geotechnical engineering and design, design-build, licensing/permitting, and EAP and security evaluations. Specialty tasks include gate inspections and reliability analyses, concrete assessment and repair, embankment and levee inspections, instrumentation monitoring and evaluation, hydrology and hydraulics, operations modeling, environmental studies, bulkheads and caissons, finite element modeling, seismic evaluations, settlement and seepage analyses, AAR and slot cutting, GIS support and electronic documents, post-tensioned anchors and penstocks/tunnels.

Princeton Hydro

Contact: Geoffrey M. Goll, P.E.
1108 Old York Road, P.O. Box 720
Ringoes, NJ 08551 US
(908) 237-5660
FAX: (908) 237-5666
ggoll@princetonhydro.com
www.princetonhydro.com

Pro-ROV Services

Contact: Mark Stepanek
7514 Girard Avenue, 1-740
La Jolla, CA 92037 US
(619) 300-0540
FAX: (858) 412-6150
mark@pro-rov.com
www.pro-rov.com



This innovative revetment system is designed specifically for Dam Overtopping Protection. It is a flexible, fiber-reinforced concrete liner that combines natural-looking engineered synthetic turf, 5,000 PSI infill, and a polyethylene geomembrane on the bottom.

HydroTurf's benefits can be summarized as follows:

- Extensively tested at Colorado State University Hydraulics Laboratory
- Superior hydraulic performance
- 30-50% less costly than traditional hard armor systems
- 50+ year functional longevity with minimal maintenance
- Aesthetic benefits of vegetation
- Rapid, low-impact and scalable installation process
- Significantly reduced carbon footprint



770.777.0386 • watershedgeo.com

U.S. Patent Nos. 7,682,105, 8,585,322, 7,682,105 & 8,403,597 and Canada Patent No. 2,663,170 and all other U.S. & International Patents Pending are sole property of Watershed Geosynthetics LLC.

Please give us a call, we'd love to help you with your dam overtopping application

QSP Packers, LLC

Contact: Mark Hartley, Ron Roland
 2316 Inter Ave., Ste D
 Puyallup, WA 98372 US
 (888) 572-2537, (253) 770-0315
 FAX: (253) 770-0327
 info@qsppackers.com
 www.qsppackers.com



QSP Packers LLC, is a Manufacture/ Supplier of a complete range of Inflatable and Mechanical Packers used in North America, and Worldwide. They have many uses, Pressure Grouting, Single/ Straddle set-up, Wireline/Core Drilling, Permeability Testing, Environmental Wells, Water Wells. Inflatable - Smallest 1"-2" to Largest 12"-18". Mechanical – for Cased Wells, or Smooth Bore Holes, 2" & 4" Standard Size, and Custom Sizes are available.

If you have a Special Application, give our Technical Support a call, and we will help you with your needs. Our hours are 6:30 am to 5:00 pm (PT) Monday through Friday. If needed after hours, give the Office a call for more info.

RST Instruments Ltd.

Contact: Pierre Choquet, VP Sales
 11545 Kingston Street
 Maple Ridge, BC V2X 0Z5 CA
 (604) 540-1100
 FAX: (604) 540-1005
 pchoquet@rstinstruments.com
 www.rstinstruments.com

S&ME, Inc.

Contact: Kathleen Chambers
 9751 Southern Pine Blvd
 Charlotte, NC 28273 US
 (704) 523-4726
 FAX: (704) 525-3953
 kchambers@smeinc.com
 www.smeinc.com

SAGE Engineers

Contact: Stephanie Crary
 2251 Douglas Blvd.
 Ste. 200
 Roseville, CA 95661 US
 (916) 677-4800
 www.SAGEengineers.com

Schnabel Engineering, Inc.

Contact: David Campbell
 1380 Wilmington Pike
 Suite 100
 West Chester, PA 19382 US
 (610) 696-6066
 FAX: (610) 696-7771
 davec@schnabel-eng.com
 www.schnabel-eng.com

**Stanley Consultants, Inc.**

Contact: Bill Holman
 5775 Wayzata Blvd. Suite 300
 Minneapolis, MN 55416 US
 (952) 546-4331
 FAX: (952) 546-4279
 holmanbill@stanleygroup.com
 www.stanleyconsultants.com



For more than 100 years Stanley Consultants has provided engineering, environmental, and construction services

worldwide. Disciplines include civil, water resources, structural, geotechnical, mechanical and electrical engineering. From domestic and international offices, we have provided a wide variety of consulting services in the areas of dams and flood damage risk reduction. Services include hydrologic and hydraulics studies, planning and feasibility, dam and levee inspections, stability/settlement/seepage evaluations, dam failure analyses, inundation mapping, emergency action plan preparation, FERC Part 12D inspections, design of new structures and existing structure rehabilitation, permitting, hydropower design and licensing, value engineering and construction services.

Stantec Consulting Services Inc.

Contact: Jeff Dingrando
 1409 N. Forbes Rd.
 Lexington, KY 40511 US
 (859) 422-3000
 FAX: (859) 422-3100
 jeffrey.dingrando@stantec.com
 www.stantec.com/water

T.Y. Lin International

Contact: James Guistina
 255 East Avenue
 Rochester, NY 14604 US
 (585) 512-2000
 james.guistina@tylin.com
 www.tylin.com

Tata & Howard, Inc.

Contact: Karen L. Gracey, P.E., Vice President
 67 Forest Street
 Marlborough, MA 01752 US
 (508) 303-9400
 FAX: (508) 449-9400
 kgracey@tataandhoward.com
 www.tataandhoward.com

Tectonic Engineering & Surveying Consultants P.C.

Contact: Thomas J. Critelli, P.E.,
Vice President & Chief Operating Officer
70 Pleasant Hill Road
Mountainville, NY 10953 US
(845) 534-5959
FAX: (845) 534-5999
tjcritelli@tectonicengineering.com
www.tectonicengineering.com



TECTONIC is a multi-disciplined engineering firm with expertise in civil, geotechnical, structural, environmental and security engineering, planning, surveying,

construction inspection and materials testing. Headquartered in New York State, Tectonic provides coverage coast-to-coast with 17 office locations nationwide and engineers licensed in 49 States. Tectonic has over 25 years of experience in dam engineering. Tectonic's services include safety inspections, geotechnical investigations, preparation of Emergency Action Plans and Operation & Maintenance Manuals, hydrologic and hydraulic modeling, embankment and spillway stability analyses, dam break analysis and inundation mapping, feasibility studies, value engineering and the design, permitting and construction administration of dam rehabilitation projects.

TREVIICOS

Contact: Amr Ragy, Director of Business Development
38 Third Avenue, 3rd Fl
Charlestown, MA 02129 US
(617) 241-4800
FAX: (617) 241-4802
aragy@treviicos.com
www.treviicos.com

Vertical Access LLC

Contact: Kent Diebolt
P.O. Box 4135
Ithaca, NY 14852 US
(607) 257-4049
FAX: (607) 257-2129
Kent@vertical-access.com
www.vertical-access.com



Carpi Geomembrane systems have stopped leakage in more than 225 dams, canals, reservoirs and tunnels worldwide.

Geomembranes are:

- Impermeable, flexible, durable
- Resistant to settlements
- Installed quickly, even underwater
- Applicable to all types of structures
- Environmentally friendly
- Efficiently monitored
- Cost effective

**Winner of the 2014 BC Hydro Project of the Year for Key Projects
Kootenay Canal – 2014 Canada**
Rehabilitation of a hydropower 105,500 ft² Rehabilitation of a Forebay Canal Using Carpi PVC Geomembrane System



Since 1963

CARPI USA, Inc. | 540-776-7727 | carpiwlks@aol.com | 4370 Starkey Road, Suite 4D Roanoke VA 24018

Vista Data Vision

Contact: Andres Andresson,
Marketing Director
Lynghals 9
Reykjavik, 00110 IS
(354) 587-8889
vdv@vistadatavision.com
www.vistadatavision.com



VDV is an all included software for monitoring instrumentation data and manage it. VDV stores and handle all instrumentation data from any data loggers and other field devices. VDV offers storage of data, visualization by graphs, real-time monitoring and data tables, multiple alarm triggers, creation of calculated sensors, fast processing, configurable security access levels, automatic reports and comprehensive web. VDV can be applied to any Geotechnical or environmental project. VDV is installed in-house, lowers operational cost and software maintenance. All data is accessible through the web in real time and there is no coding needed.

WatershedGeo

Contact: Curt Boling
11400 Atlantis Place
Alpharetta, GA 30022 US
(770) 777-0386
FAX: (770) 777-0387
cboling@watershedgeo.com
www.watershedgeo.com

Worthington Products, Inc.

Contact: Paul S. Meeks
3405 Kuemerle CT NE
Canton, OH 44705 US
(330) 452-7400
FAX: (330) 452-7495
sales@tuffboom.com
www.tuffboom.com



5 Reasons Dam Owners Choose Worthington: (1) 15-years' experience. (2) Installations in 51-Countries. (3) Full Engineering/Design support. (4) Complete range of waterway barriers. (5) The best customer support in the industry.

Worthington Products is recognized worldwide as the leading provider of waterway barriers backed by common sense design and excellent customer service. Our waterway barrier products include: (1) Log & Debris Booms, (2) Public Safety Boat Barriers, (3) Fish-Guidance Systems, (4) Design/Engineering Services, (5) Buoys & Markers, (6) Ice Booms, (7) Counter-Terrorist Barriers and (8) custom floating walkways, boat gates, mooring buoys, vertical riser systems and

more. Bottom line: You can trust Worthington for all of your waterway barrier needs before, during and long after the sale. Visit us online at www.tuffboom.com or contact us by phone.

WSP

Contact: Allan Estivalet, PE
555 Pleasantville Road, South Building
Briarcliff Manor, NY 10510 US
(914) 747-1120
FAX: (914) 747-1956
allan.estivalet@wspgroup.com
www.wspgroup.com/usa



Dams and related features are critical components of the nation's infrastructure. Global climate change, aging infrastructure, as well as a complex regulatory environment present major challenges for our communities. WSP understands these challenges and is fully committed to assisting our clients in keeping their infrastructure safe and resilient. We have developed a solid expertise in the fields of dams and water resources engineering. Our dam experience includes concrete gravity, masonry, earth, rockfill, roller compacted concrete, levees, and tailings type dams. We serve a wide range of clients from private owners to federally-owned dams.

An aerial photograph of a suburban residential neighborhood. In the foreground, a wide, calm river flows from the bottom left towards the center. A sandy beach and a line of green trees separate the river from the houses. The houses are mostly two-story structures with various roof colors, surrounded by lush green lawns and trees. The background shows more of the neighborhood extending towards a distant horizon under a clear sky.

Preventing an **Underwater Mortgage**

Without levee improvements, the 100,000 residents of Sacramento's Natomas basin faced a 99% chance their homes would flood over a 30-year mortgage. We've evaluated 22 miles of levees, designing new flood protection systems to help protect lives and \$7 billion in property. **This is where great begins.**



hdrinc.com

SPECIALTY SECTION

This is an alphabetical index to help you locate a company that offers these particular services and products.

Services

Automated Data Acquisition – Geotechnical Instrumentation

AECOM

BDI
Brayman Construction
Canary Systems, Inc.
D'Appolonia
Earth Reinforcement Testing, Inc.
(ERTesting)
Fugro Consultants Inc.
Henley-Johnston & Associates, Inc.
hydroGEOPHYSICS Inc.
Mueser Rutledge Consulting
Engineers
RST Instruments Ltd.
Stantec Consulting Services Inc.
Vista Data Vision

Camera Inspection – Pipes

ASI Constructors, Inc.

DYWIDAG Systems International
(DSI)
FENSTERMAKER
Pro-ROV Services
Vertical Access LLC

Computer-Aided Design & Engineering

Andrzejewski Engineering
CME Engineering
Parsons Brinckerhoff
S&ME, Inc.
T.Y. Lin International
Tata & Howard, Inc.
WSP

Concrete Inspection/Repair

ASI Constructors, Inc.

CME Engineering
Dewberry

DYWIDAG Systems International
(DSI)
Engineered Restorations, Inc.
Fugro Consultants Inc.
Fuss & O'Neill, Inc.
Gomez and Sullivan Engineers, DPC
Hutton Construction
hydroGEOPHYSICS Inc.
McCormick Taylor
Mead & Hunt, Inc.

OBG

Parsons Brinckerhoff
Stanley Consultants, Inc.
T.Y. Lin International
Tata & Howard, Inc.
Vertical Access LLC
WSP

Construction

AECOM

ASI Constructors, Inc.
Barnard Construction Company, Inc.
Brayman Construction
DYWIDAG Systems International
(DSI)

Hayward Baker Inc.

Hutton Construction
Moretrench

Construction Inspection

CDM Smith

Civil Dynamics
CME Engineering
DOWL
Fugro Consultants Inc.
Gomez and Sullivan Engineers, DPC
Henley-Johnston & Associates, Inc.
McMahon & Mann Consulting
Engineers, P.C.
Michael Baker International

OBG

Princeton Hydro
S&ME, Inc.
Stanley Consultants, Inc.
T.Y. Lin International
Tata & Howard, Inc.
Tectonic Engineering & Surveying
Consultants P.C.

Construction Management

Amec Foster Wheeler

ASI Constructors, Inc.

Barnard Construction Company, Inc.

Brayman Construction
CME Engineering
D'Appolonia
Dewberry
DOWL

Gannett Fleming

HDR

Hutton Construction

Kleinfelder

Michael Baker International
WSP

Construction Testing

CME Engineering
DOWL
Fugro Consultants Inc.
Henley-Johnston & Associates, Inc.
Kleinfelder
Tectonic Engineering & Surveying
Consultants P.C.

Dam Break Studies

Amec Foster Wheeler

Andrzejewski Engineering
Barr Engineering Co.

CDM Smith

Civil Dynamics

Dewberry
DOWL
Flo-2D Software, Inc.
Gomez and Sullivan Engineers, DPC
McCormick Taylor
Mead & Hunt, Inc.

OBG

Parsons Brinckerhoff
SAGE Engineers
Schnabel Engineering, Inc.
Stanley Consultants, Inc.
T.Y. Lin International
Tata & Howard, Inc.
Tectonic Engineering & Surveying
Consultants P.C.
WSP

Dam Design

AECOM

Amec Foster Wheeler
Andrzejewski Engineering
Aubian Engineering Inc.
Barr Engineering Co.

CDM Smith

Civil Dynamics
CME Engineering
D'Appolonia
Dewberry
DOWL
Dyrhoff Inc.
Fuss & O'Neill, Inc.

Gannett Fleming

Gomez and Sullivan Engineers, DPC

HDR

Kleinfelder

McCormick Taylor
McMahon & Mann Consulting
Engineers, P.C.
Michael Baker International
Mueser Rutledge Consulting
Engineers

OBG

Parsons Brinckerhoff
Princeton Hydro
S&ME, Inc.
SAGE Engineers
Schnabel Engineering, Inc.
Stanley Consultants, Inc.

Stantec Consulting Services Inc.

T.Y. Lin International
Tata & Howard, Inc.
Tectonic Engineering & Surveying
Consultants P.C.
WatershedGeo
WSP

Dam Inspection/Monitoring

AECOM

Andrzejewski Engineering
Aubian Engineering Inc.
Barr Engineering Co.
Canary Systems, Inc.
Civil Dynamics
CME Engineering
COH Inc.
D'Appolonia
DOWL
Dyrhoff Inc.
DYWIDAG Systems International
(DSI)
Earth Reinforcement Testing, Inc.
(ERTesting)

FENSTERMAKER

Fugro Consultants Inc.

Gannett Fleming

Gomez and Sullivan Engineers, DPC
Henley-Johnston & Associates, Inc.
hydroGEOPHYSICS Inc.
McCormick Taylor
McMahon & Mann Consulting
Engineers, P.C.
Mead & Hunt, Inc.

Michael Baker International
Mueser Rutledge Consulting
Engineers

OBG

Parsons Brinckerhoff
Princeton Hydro
Pro-ROV Services
RST Instruments Ltd.
Schnabel Engineering, Inc.
Stanley Consultants, Inc.
T.Y. Lin International
Tata & Howard, Inc.
Vertical Access LLC
Vista Data Vision

Dam Operations & Maintenance

Andrzejewski Engineering
Applied Weather Associates, LLC
ASI Constructors, Inc.
Aubian Engineering Inc.
Civil Dynamics
COH Inc.
Dyrhoff Inc.
DYWIDAG Systems International
(DSI)
Emagineered Solutions, Inc.
FENSTERMAKER
Gomez and Sullivan Engineers, DPC
McCormick Taylor
McMahon & Mann Consulting
Engineers, P.C.

OBG

Parsons Brinckerhoff
Schnabel Engineering, Inc.
T.Y. Lin International
WatershedGeo
WSP

Dam Repair/Remediation

AECOM

Amec Foster Wheeler

Andrzejewski Engineering
ASI Constructors, Inc.
Aubian Engineering Inc.
Avanti International
Barnard Construction Company, Inc.

Brayman Construction

CDM Smith

Center Rock Inc.
Civil Dynamics
CME Engineering
D'Appolonia
Dewberry
Dyrhoff Inc.
DYWIDAG Systems International
(DSI)
Emagineered Solutions, Inc.
Engineered Restorations, Inc.
FENSTERMAKER
Fuss & O'Neill, Inc.
Gannett Fleming
Gomez and Sullivan Engineers, DPC

Hayward Baker Inc.

Hutton Construction

Kleinfelder

McCormick Taylor

McMahon & Mann Consulting Engineers, P.C.

Mead & Hunt, Inc.

Michael Baker International

Moretrench

Mueser Rutledge Consulting Engineers

OBG

Parsons Brinckerhoff

Princeton Hydro

QSP Packers, LLC

S&ME, Inc.

Schnabel Engineering, Inc.

Stanley Consultants, Inc.

Stantec Consulting Services Inc.

Tata & Howard, Inc.

TREVIICOS

WatershedGeo

WSP

Mueser Rutledge Consulting Engineers

OBG

Parsons Brinckerhoff

Princeton Hydro

Pro-ROV Services

S&ME, Inc.

Schnabel Engineering, Inc.

Stanley Consultants, Inc.

Stantec Consulting Services Inc.

T.Y. Lin International

Tata & Howard, Inc.

Tectonic Engineering & Surveying Consultants P.C.

WSP

**Emergency Action Plan/
Emergency Response Plan**

Amec Foster Wheeler

Andrzejewski Engineering

Barr Engineering Co.

CDM Smith

Civil Dynamics

Dam Safety Inspection

AECOM

Andrzejewski Engineering

Aubian Engineering Inc.

Barr Engineering Co.

CDM Smith

Civil Dynamics

D'Appolonia

Dewberry

DOWL

Dyrhoff Inc.

DYWIDAG Systems International (DSI)

Earth Reinforcement Testing, Inc. (ERTesting)

FENSTERMAKER

Fugro Consultants Inc.

Gomez and Sullivan Engineers, DPC

HDR

hydroGEOPHYSICS Inc.

Kleinfelder

McCormick Taylor

McMahon & Mann Consulting Engineers, P.C.

Mead & Hunt, Inc.

Integrated Dam Safety.

CANARY

Canary Systems, Inc.
5 Gould Road
New London, NH 03257
Call +1.603.526.9800
info@canarysystems.com
www.canarysystems.com

PENDULUM

GPS STATION

CRACKMETER

PIEZOMETER

FLOWMETER

EXTENSOMETER

We help clients better manage risk and increase the safety of their operations by tying together all the loose ends: the hardware required for automatic data acquisition - and the software to collect, process, store and present the data in an efficient way on a single combined powerful monitoring platform.



Sela 22, New Orleans LA



LPV 111 New Orleans, LA



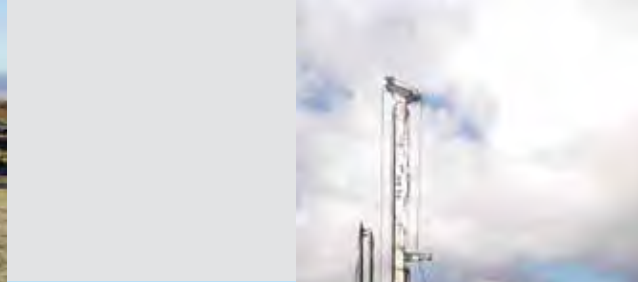
Choctawhatchee Bay, Santa Rosa Beach FL



Herbert Hoover Dike



OCI Green River, WY



dam rehabilitation

slurry walls

cutoff walls

secant piles

caissons

jet grouting

soil mixing

soil improvement

auger cast piles



Wolf Creek Dam, Jamestown KY



Bechara Industrial,
Puerto Rico



First Street Tunnel,
Washington DC

solutions provider



D'Appolonia

Dewberry

DOWL

Gannett Fleming

Gomez and Sullivan Engineers, DPC

HDR

McCormick Taylor

Mead & Hunt, Inc.

Michael Baker International

OBG

Parsons Brinckerhoff

Stanley Consultants, Inc.

Stantec Consulting Services Inc.

Tata & Howard, Inc.

Tectonic Engineering & Surveying
Consultants P.C.

WSP

Environmental Studies

CDM Smith

CME Engineering

Dewberry

Fuss & O'Neill, Inc.

Gomez and Sullivan Engineers, DPC

Henley-Johnston & Associates, Inc.

hydroGEOPHYSICS Inc.

McCormick Taylor

Princeton Hydro

S&ME, Inc.

Tectonic Engineering & Surveying
Consultants P.C.

WSP

Finite Element Modeling

BDI

D'Appolonia

Flo-2D Software, Inc.

Gomez and Sullivan Engineers, DPC

McMahon & Mann Consulting
Engineers, P.C.

Parsons Brinckerhoff

Stantec Consulting Services Inc.

WSP

**Fish Facility Design/Installation/
Monitoring**

CDM Smith

FENSTERMAKER

Fuss & O'Neill, Inc.

Gannett Fleming

Gomez and Sullivan Engineers, DPC

HDR

McCormick Taylor

Parsons Brinckerhoff

Princeton Hydro

Worthington Products, Inc.

**Flood Hydrology, PMP/PMF
Analysis**

AECOM

Amec Foster Wheeler

Andrzejewski Engineering

Applied Weather Associates, LLC

Aubian Engineering Inc.

Barr Engineering Co.

Civil Dynamics

D'Appolonia

Dewberry

Flo-2D Software, Inc.

Gomez and Sullivan Engineers, DPC

HDR

Hydroplus, Inc.

Kleinfelder

McCormick Taylor

Mead & Hunt, Inc.

Michael Baker International

Parsons Brinckerhoff

Princeton Hydro

S&ME, Inc.

Stanley Consultants, Inc.

T.Y. Lin International

Tata & Howard, Inc.

Tectonic Engineering & Surveying
Consultants P.C.

WSP

Foundation Engineering

AECOM

Brayman Construction

CDM Smith

DOWL

Earth Reinforcement Testing, Inc.
(ERTesting)

Fugro Consultants Inc.

Gomez and Sullivan Engineers, DPC

Hayward Baker Inc.

Henley-Johnston & Associates, Inc.

McMahon & Mann Consulting
Engineers, P.C.

Mueser Rutledge Consulting
Engineers

Princeton Hydro

S&ME, Inc.

SAGE Engineers

Stanley Consultants, Inc.

Tectonic Engineering & Surveying
Consultants P.C.

Foundation Grouting

ASI Constructors, Inc.

Avanti International

**Barnard Construction Company,
Inc.**

Brayman Construction

Engineered Restorations, Inc.

Fuss & O'Neill, Inc.

Hayward Baker Inc.

McMahon & Mann Consulting
Engineers, P.C.

Moretrench

Mueser Rutledge Consulting
Engineers

QSP Packers, LLC

TREVIICOS

Geology

CME Engineering

DOWL

Fugro Consultants Inc.

Gomez and Sullivan Engineers, DPC

HDR

hydroGEOPHYSICS Inc.

Kleinfelder

McMahon & Mann Consulting
Engineers, P.C.

Mueser Rutledge Consulting
Engineers

Parsons Brinckerhoff

Schnabel Engineering, Inc.

Geotechnical Analysis & Design

AECOM

Amec Foster Wheeler

Barr Engineering Co.

CDM Smith

CME Engineering

D'Appolonia

Dewberry

DOWL

Fugro Consultants Inc.

Fuss & O'Neill, Inc.

Gannett Fleming

Gomez and Sullivan Engineers, DPC

HDR

Henley-Johnston & Associates, Inc.

hydroGEOPHYSICS Inc.

Kleinfelder

McMahon & Mann Consulting
Engineers, P.C.

Mead & Hunt, Inc.

Michael Baker International

Mueser Rutledge Consulting
Engineers

Parsons Brinckerhoff

Princeton Hydro

RST Instruments Ltd.

S&ME, Inc.

SAGE Engineers

Schnabel Engineering, Inc.

Stanley Consultants, Inc.

Stantec Consulting Services Inc.

Tectonic Engineering & Surveying
Consultants P.C.

WSP

Grouting, Seepage Control

AECOM

ASI Constructors, Inc.

Avanti International

Barnard Construction Company, Inc.

Brayman Construction

CARPI USA Inc

CDM Smith

CME Engineering

Engineered Restorations, Inc.

Fuss & O'Neill, Inc.

Gannett Fleming

Hayward Baker Inc.

Hutton Construction

McMahon & Mann Consulting
Engineers, P.C.

Moretrench

Mueser Rutledge Consulting
Engineers

QSP Packers, LLC

Stantec Consulting Services Inc.

T.Y. Lin International

TREVIICOS

Hazard Potential Classification

Andrzejewski Engineering

Aubian Engineering Inc.

Civil Dynamics

Dewberry

DOWL

Fugro Consultants Inc.

Gomez and Sullivan Engineers, DPC

Stanley Consultants, Inc.

T.Y. Lin International

WSP

Hydro-Power Impoundment

Aubian Engineering Inc.

Barnard Construction Company, Inc.

CDM Smith

FENSTERMAKER

Fuss & O'Neill, Inc.

Gomez and Sullivan Engineers, DPC

Stanley Consultants, Inc.

Hydrology & Hydraulics

AECOM

Andrzejewski Engineering

Applied Weather Associates, LLC

Aubian Engineering Inc.

Barr Engineering Co.

CDM Smith

Civil Dynamics

D'Appolonia

Dewberry

DOWL

Fugro Consultants Inc.

Fuss & O'Neill, Inc.

Flo-2D Software, Inc.

Gomez and Sullivan Engineers, DPC

hydroGEOPHYSICS Inc.

Hydroplus, Inc.

Kleinfelder

McCormick Taylor

Mead & Hunt, Inc.

Michael Baker International

Parsons Brinckerhoff

Princeton Hydro

S&ME, Inc.

Schnabel Engineering, Inc.

Stanley Consultants, Inc.

Stantec Consulting Services Inc.

T.Y. Lin International

Tectonic Engineering & Surveying
Consultants P.C.

WSP

Incremental Damage Assessment

Civil Dynamics

Dewberry

DOWL

Earth Reinforcement Testing, Inc.
(ERTesting)

Fuss & O'Neill, Inc.

Gomez and Sullivan Engineers, DPC

McCormick Taylor

Stanley Consultants, Inc.

Instrumentation

AECOM

BDI

Brayman Construction

Canary Systems, Inc.

D'Appolonia

DYWIDAG Systems International
(DSI)

Earth Reinforcement Testing, Inc.
(ERTesting)

FENSTERMAKER

Fugro Consultants Inc.

Henley-Johnston & Associates, Inc.

McMahon & Mann Consulting
Engineers, P.C.

Mueser Rutledge Consulting
Engineers

Parsons Brinckerhoff
RST Instruments Ltd.
Stantec Consulting Services Inc.
Vista Data Vision

Levee Design

AECOM

Amec Foster Wheeler
Barr Engineering Co.

CDM Smith

Gannett Fleming

HDR

International Erosion Control
Systems
McCormick Taylor
McMahon & Mann Consulting
Engineers, P.C.

OBG

SAGE Engineers
Schnabel Engineering, Inc.
Stanley Consultants, Inc.
Stantec Consulting Services Inc.
WatershedGeo
WSP

Levee Inspection/Monitoring

Amec Foster Wheeler

Barr Engineering Co.
Fugro Consultants Inc.
Gomez and Sullivan Engineers, DPC
Henley-Johnston & Associates, Inc.
hydroGEOPHYSICS Inc.
McCormick Taylor
McMahon & Mann Consulting
Engineers, P.C.
Mead & Hunt, Inc.

OBG

RST Instruments Ltd.
Schnabel Engineering, Inc.
Stanley Consultants, Inc.
Vista Data Vision

Levee Operations & Maintenance

Applied Weather Associates, LLC
Emagineered Solutions, Inc.
McCormick Taylor

McMahon & Mann Consulting
Engineers, P.C.
Schnabel Engineering, Inc.
WatershedGeo

Levee Repair/Remediation

Applied Weather Associates, LLC
Emagineered Solutions, Inc.
McCormick Taylor
McMahon & Mann Consulting
Engineers, P.C.
Schnabel Engineering, Inc.
WatershedGeo

Levee Safety Inspection

Amec Foster Wheeler

CDM Smith
Fugro Consultants Inc.

Gannett Fleming

hydroGEOPHYSICS Inc.

Kleinfelder

McCormick Taylor



FUSS & O'NEILL

Dam Improvement Design
Dam Removal Design
Dam Safety Inspections
Emergency Action Plans
Engineering Investigations
Fish Passage
Grant Applications
Hydropower Licensure
Lake & Pond Dredging
O & M Plans
Permitting
Portfolio Assessment
Remote Monitoring Design
www.fando.com

Philip W. Moreschi, PE 800.286.2469 x5223 pmoreschi@fando.com
Connecticut • Massachusetts • New York • Rhode Island • South Carolina

McMahon & Mann Consulting
Engineers, P.C.
Mead & Hunt, Inc.

OBG
Schnabel Engineering, Inc.
Stantec Consulting Services Inc.
WSP

Liquefaction Studies

CDM Smith
Fugro Consultants Inc.
Fuss & O'Neill, Inc.
Gomez and Sullivan Engineers, DPC
HDR
McMahon & Mann Consulting
Engineers, P.C.
Mueser Rutledge Consulting
Engineers
S&ME, Inc.
SAGE Engineers
WSP

Outlet Works

ASI Constructors, Inc.
Aubian Engineering Inc.
**Barnard Construction Company,
Inc.**
CDM Smith
DOWL
FENSTERMAKER
Fuss & O'Neill, Inc.
Gomez and Sullivan Engineers, DPC
HDR
Hutton Construction
Kleinfelder
McCormick Taylor
Parsons Brinckerhoff
Pro-ROV Services
Stanley Consultants, Inc.
Tata & Howard, Inc.
WatershedGeo

Penstocks

Aubian Engineering Inc.
**Barnard Construction Company,
Inc.**
Barr Engineering Co.
Brayman Construction
FENSTERMAKER
Gomez and Sullivan Engineers, DPC
HDR
Hutton Construction
Parsons Brinckerhoff
Pro-ROV Services
SAGE Engineers
Stanley Consultants, Inc.

Pump Storage Impoundments

**Barnard Construction Company,
Inc.**
FENSTERMAKER
Gomez and Sullivan Engineers, DPC
Hutton Construction
Parsons Brinckerhoff
Stanley Consultants, Inc.
WatershedGeo



50+
YEARS EXPERIENCE

Fugro offers an integrated set of geological, geotechnical, engineering and construction monitoring skills for evaluating the safety of dams during construction and operation. Our experienced staff works to develop technically sound and efficient dam safety evaluations by providing initial assessments, field investigations, data analyses, expert review and consultation, construction support, and regulatory assistance.

Fugro Consultants, Inc.
Telephone: +1 888 241 6615
Email: inquiries@fugro.com
www.fugroconsultants.com

Remote Sensing for Dams

DYWIDAG Systems International
(DSI)
FENSTERMAKER
HDR
RST Instruments Ltd.

Risk Assessment

AECOM
Amec Foster Wheeler
Applied Weather Associates, LLC
Aubian Engineering Inc.

CDM Smith
D'Appolonia
DOWL
Flo-2D Software, Inc.
Fugro Consultants Inc.
Fuss & O'Neill, Inc.
Gannett Fleming
Gomez and Sullivan Engineers, DPC
HDR
Kleinfelder
Mead & Hunt, Inc.
Michael Baker International
Schnabel Engineering, Inc.

Stantec Consulting Services Inc.
T.Y. Lin International

Rock Anchors for Concrete Dams

Brayman Construction
DYWIDAG Systems International
(DSI)
Earth Reinforcement Testing, Inc.
(ERTesting)
Gannett Fleming
Gomez and Sullivan Engineers, DPC
Hayward Baker Inc.
HDR
Hutton Construction
McCormick Taylor
McMahon & Mann Consulting
Engineers, P.C.
Michael Baker International
Moretrench
Mueser Rutledge Consulting
Engineers
Parsons Brinckerhoff
Stantec Consulting Services Inc.
Tata & Howard, Inc.
WSP



For additional information contact
Howard Perry, PE
hperry@smeinc.com
1-800-849-2517



Planning | Permitting | Design

- Remedial Repairs
- Spillways / Lake Drains
- Internal Drainage
- Retaining Structures
- Cofferdams
- Slurry Walls
- Heavy Foundations
- Earth Dams
- Ash Ponds
- Upland Reservoirs
- Roller Compacted Concrete

S&ME delivers engineering, design, planning, environmental and construction services for the built environment from 35 locations across the US.

www.smeinc.com

Roller Compacted Concrete Dams

ASI Constructors, Inc.
Barnard Construction Company, Inc.
CDM Smith
D'Appolonia
DOWL
Gannett Fleming
HDR
Hutton Construction
Kleinfelder
McCormick Taylor
Michael Baker International
Tata & Howard, Inc.

Security

Parsons Brinckerhoff
Worthington Products, Inc.

Seepage Analysis

Amec Foster Wheeler

Barr Engineering Co.

CDM Smith

DOWL

Fugro Consultants Inc.

Gannett Fleming

Gomez and Sullivan Engineers, DPC

Henley-Johnston & Associates, Inc.

hydroGEOPHYSICS Inc.

McCormick Taylor

McMahon & Mann Consulting

Engineers, P.C.

Mead & Hunt, Inc.

Mueser Rutledge Consulting

Engineers

S&ME, Inc.

SAGE Engineers

Stanley Consultants, Inc.

Tectonic Engineering & Surveying

Consultants P.C.

WSP

Seismicity Studies

DOWL

Fugro Consultants Inc.

Kleinfelder

McMahon & Mann Consulting

Engineers, P.C.

Mueser Rutledge Consulting

Engineers

Parsons Brinckerhoff

SAGE Engineers

Stantec Consulting Services Inc.

WSP

Slope Protection

AECOM

ASI Constructors, Inc.

Civil Dynamics

Gomez and Sullivan Engineers, DPC

Hayward Baker Inc.

Hutton Construction

hydroGEOPHYSICS Inc.

International Erosion Control

Systems

McCormick Taylor

McMahon & Mann Consulting

Engineers, P.C.

Parsons Brinckerhoff

QSP Packers, LLC

S&ME, Inc.

SAGE Engineers

WatershedGeo

Slurry Wall Cutoffs for Dams

AECOM

Amec Foster Wheeler

ASI Constructors, Inc.

Barnard Construction Company,

Inc.

CDM Smith

Hayward Baker Inc.

McMahon & Mann Consulting

Engineers, P.C.

Moretrench

QSP Packers, LLC

SAGE Engineers

TREVIICOS



**Committed to delivering sustainable water resources
engineering that strengthens communities and
positively impacts the quality of life**

A national firm with a local presence

Northeast: Peter Black, PE, CME, CFM • 973.576.9677 • pblack@dewberry.com

Mid-Atlantic: Jeff Cowan, PE • 703.468.2243 • jcowan@dewberry.com

Southeast and West: Sam Crampton, PE, CFM • 678.537.8622 • scrampton@dewberry.com

www.dewberry.com



Spillway Design

Amec Foster Wheeler

Andrzejewski Engineering
Applied Weather Associates, LLC
Aubian Engineering Inc.
Barr Engineering Co.

CDM Smith

Civil Dynamics
CME Engineering
COH Inc.
D'Appolonia
Dewberry
DOWL

Gannett Fleming

Gomez and Sullivan Engineers, DPC

HDR

Hydroplus, Inc.
International Erosion Control
Systems

Kleinfelder

McCormick Taylor
Mead & Hunt, Inc.
Michael Baker International

OBG

Parsons Brinckerhoff
SAGE Engineers
Stanley Consultants, Inc.
T.Y. Lin International
Tata & Howard, Inc.
Tectonic Engineering & Surveying
Consultants P.C.
WatershedGeo
WSP

Stability Analysis

Aubian Engineering Inc.
Barr Engineering Co.

CDM Smith

Civil Dynamics
CME Engineering
DOWL
Fuss & O'Neill, Inc.
Gomez and Sullivan Engineers, DPC

HDR

Henley-Johnston & Associates,
Inc.
hydroGEOPHYSICS Inc.
International Erosion Control
Systems

McCormick Taylor
McMahon & Mann Consulting
Engineers, P.C.
Mead & Hunt, Inc.
Michael Baker International
Mueser Rutledge Consulting
Engineers

OBG

Parsons Brinckerhoff
Princeton Hydro
S&ME, Inc.
SAGE Engineers
Stanley Consultants, Inc.
Tata & Howard, Inc.
Tectonic Engineering & Surveying
Consultants P.C.
WSP

Stilling Basins

ASI Constructors, Inc.

Aubian Engineering Inc.

Barnard Construction Company, Inc.

Dewberry
DOWL
FENSTERMAKER
Gomez and Sullivan Engineers, DPC
Hutton Construction
Hydroplus, Inc.
International Erosion Control
Systems

OBG

Stanley Consultants, Inc.

Surveys & Mapping

CME Engineering
DOWL
FENSTERMAKER
Fugro Consultants Inc.
hydroGEOPHYSICS Inc.
Michael Baker International
Pro-ROV Services
Tectonic Engineering & Surveying
Consultants P.C.
Vertical Access LLC
WSP

Tailing Dams

Amec Foster Wheeler

Applied Weather Associates, LLC
Barnard Construction Company, Inc.

Barr Engineering Co.
Canary Systems, Inc.

CDM Smith

D'Appolonia
DOWL
Emagineered Solutions, Inc.
Flo-2D Software, Inc.
Gomez and Sullivan Engineers, DPC

HDR

Hutton Construction
hydroGEOPHYSICS Inc.
International Erosion Control
Systems
McCMahon & Mann Consulting
Engineers, P.C.
QSP Packers, LLC
WatershedGeo

Underwater Inspection & Repair

ASI Constructors, Inc.

Brayman Construction

CARPI USA Inc

FENSTERMAKER
Gomez and Sullivan Engineers,
DPC
Pro-ROV Services

Stantec Consulting Services Inc.

Underwater Welding & Construction

ASI Constructors, Inc.

Barnard Construction Company, Inc.

Brayman Construction
Hutton Construction

Products

Anchors, Tiebacks, Tiedowns

Brayman Construction
DYWIDAG Systems International
(DSI)

Hayward Baker Inc.

Moretrench

Dams/Retaining Walls

Dyrhoff Inc.

Hayward Baker Inc.

International Erosion Control
Systems
Mecan-Hydro
Moretrench
WatershedGeo

Gates & Hoists

Lemke Industrial Machine LLC
Mecan-Hydro

Geotechnical Instrumentation

AECOM

BDI
Brayman Construction
Canary Systems, Inc.
D'Appolonia
DYWIDAG Systems International
(DSI)
Fugro Consultants Inc.
Henley-Johnston & Associates, Inc.
Mueser Rutledge Consulting
Engineers
RST Instruments Ltd.
Stantec Consulting Services Inc.
Vista Data Vision

Geotextiles/Geomembranes

CARPI USA Inc

International Erosion Control
Systems
WatershedGeo

Inclinometers

BDI
Canary Systems, Inc.
RST Instruments Ltd.

Inflatable & Mechanical Grout Packers

QSP Packers, LLC

Pressure Transducers

BDI
Canary Systems, Inc.
RST Instruments Ltd.

Dam Safety & Rehabilitation

**PARSONS
BRINCKERHOFF**

- Inspections
- Stability Analysis
- Civil Structural Evaluations
- Instrumentation/Evaluation
- Surveillance/Monitoring Plans
- Flood/Flow Studies
- Remediation
- Spillway Analysis
- Gates
- Site Security
- Engineering/Design
- Penstocks/Tunnels
- Emergency Action Plans
- GIS Support
- Owner's Engineer

Paul Shiers
617-960-4990
Shiers@PBworld.com
Boston, MA

Matthew Chan
503-478-2861
ChanM@PBworld.com
Portland, OR

Jesse Kropelnicki
617-960-4975
Kropelnicki@PBworld.com
Boston, MA

For career opportunities or more information about Parsons Brinckerhoff, please visit www.PBworld.com

**Public Safety Equipment
(Buoys, Boat Restraints,
Warnings)**

Worthington Products, Inc.

**Remotely Operated Vehicles
(Underwater)**

DYWIDAG Systems International
(DSI)
FENSTERMAKER
HDR
RST Instruments Ltd.

Strain Gages

BDI
Canary Systems, Inc.
DYWIDAG Systems International
(DSI)
RST Instruments Ltd.
Worthington Products, Inc.

Underwater Cameras

ASI Constructors, Inc.
DYWIDAG Systems International
(DSI)
FENSTERMAKER
Pro-ROV Services
Vertical Access LLC



CUTTING EDGE SOLUTIONS: DELIVERED

T.Y. Lin International is proud to provide an array of quality, innovative dam, levee, and waterway services.

- Inspections + Evaluations
- New Design
- Emergency Action Plans
- Failure Analysis
- Rehabilitation + Code Compliance
- Maintenance Plans + Support
- Permitting
- Construction Support

TYLININTERNATIONAL

www.tylin.com





GOMEZ AND SULLIVAN ENGINEERS



Services Include

- Dam Safety Inspection
- Dam Design
- Dam Repair/Remediation
- Risk Assessment
- Hydrology/Hydraulics
- Flood Hydrology
- PMP/PMF Analysis
- Spillway & Outlet Works Design
- 2-D & 3-D Hydraulic Analysis
- CFD Modeling
- Dam Break Studies
- Hazard Potential Classification
- Emergency Action Plans
- Penstocks
- Geology
- Geotechnical Analysis & Design
- Instrumentation
- Monitoring/Evaluation
- Liquefaction Studies
- Stability Analysis
- Seismic Stability Analysis
- Rock Anchor Design
- Tailing Dams
- Levee Safety Inspection
- Levee Repair/Remediation
- Hydropower Engineering & Design
- Hydropower Licensing & Compliance
- Environmental Studies
- Fish Passage Design/Monitoring



Utica, NY

(315)724-4860

Williamsville, NY

(716)250-4960

Albany, NY

(518)407-0050

Henniker, NH

(603)428-4960

NOW HIRING! Visit gomezandsullivan.com for more information.



ASDSO is your source for Dam Safety Training & Educational Opportunities. Ranging from the Dam Safety Annual Conference held each September, to our Regional Conference held each spring, or in-depth Classroom Seminars and monthly Webinars, ASDSO has what you're looking for.

Can't make a training session or conference but want to keep up-to-date on the latest training? The ASDSO Bookstore has you covered with archived webinars, conference proceedings, classroom seminar CD's, and much more.

Upcoming ASDSO Training

Conferences

- Dam Safety 2015, September 13-17, 2015; New Orleans, LA
- West Regional Conference, March 9-11, 2016; Sacramento, CA
- Dam Safety 2016, September 11-15, 2016; Philadelphia, PA

2016 Classroom Seminars: Watch DamSafety.org for dates!

- Seepage Through Earthen Dams
- HEC-RAS
- Fundamentals of Reinforced Concrete Design of Hydraulic Structures
- Stability Analysis of Embankment Dams
- Inspection and Assessments of Dams

Webinars: Watch DamSafety.org for the 2016 schedule to be announced!

- Rainfall and Dam Safety - From PMP to the 100-Year Storm, October 13, 2015
- Human Factors in Dam Failures and Incidents, November 10, 2015
- Seepage Rehab Methods, December 8, 2015

Who Should Attend?

- State Dam Safety Officials
- Federal Dam Safety Officials
 - Civil, Geotechnical, Environmental, and Structural Engineers
- Dam Owners & Operators
- Scientists & Technicians
- Engineering Consultants
- Service & Product Suppliers
 - Academic Professors & Researchers
 - Students
- Hydrologists & Geologists
- Levee Safety Professionals



AECOM and URS have joined forces to provide a full range of services for existing and new dams:



- Planning
- NEPA compliance
- Permitting
- Safety inspections
- Engineering analysis
- Failure modes analysis
- Risk analysis
- Automated instrumentation
- Design
- Construction management
- Emergency action planning
- Operation & maintenance plans
- Security
- Decommissioning
- Dam safety training



aecom.com

John W. France, PE, D.WRE T- 303 740 3812
john.france@aecom.com

EARTH REINFORCEMENT TESTING, Inc. (ERTesting)

Earth Reinforcement Testing, Inc. (ERTesting) performance Monitoring and condition assessments for rock bolts, soil reinforcements And prestressed anchorages including dam anchors and tie-downs. Nondestructive and minimally invasive test methods including:

- Corrosion monitoring via LPR and other electrochemical test techniques,
- Sonic echo, impulse response, and ultrasonic test techniques for condition assessments,
- Geophysical testing,
- Load testing,
- Direct observation of exhumed reinforcements, and
- Service life modeling.



For more information, please contact: Kenneth L. Fishman, Ph.D., P.E. 716.984.1633 www.ertesting.com



COMPANIES BY STATE

This section is designed to help you locate a company that works in your state.

Alabama

AECOM

Amec Foster Wheeler

Applied Weather Associates, LLC

ASI Constructors, Inc.

Aubian Engineering Inc.

Barnard Construction Company, Inc.

Barr Engineering Co.

BDI

Brayman Construction

Canary Systems, Inc.

CARPI USA Inc

CDM Smith

Center Rock Inc.

COH Inc.

D'Appolonia

Dewberry

Dyrhoff Inc.

DYWIDAG Systems International (DSI)

Earth Reinforcement Testing, Inc. (ERTesting)

Emagineered Solutions, Inc.

Engineered Restorations, Inc.

FENSTERMAKER

Flo-2D Software, Inc.

Fugro Consultants Inc.

Gannett Fleming

Hayward Baker Inc.

HDR

hydroGEOPHYSICS Inc.

Hydroplus, Inc.

International Erosion Control Systems

Kleinfelder

Lemke Industrial Machine LLC

McMahon & Mann Consulting

Engineers, P.C.

Mead & Hunt, Inc.

Mecan-Hydro

Michael Baker International

Moretrench

Mueser Rutledge Consulting Engineers

OBG

Parsons Brinckerhoff

Pro-ROV Services

QSP Packers, LLC

RST Instruments Ltd.

S&ME, Inc.

SAGE Engineers

Schnabel Engineering, Inc.

Stanley Consultants, Inc.

Stantec Consulting Services Inc.

T.Y. Lin International

Tectonic Engineering & Surveying Consultants P.C.

TREVIICOS

Vertical Access LLC

Vista Data Vision

WatershedGeo

Worthington Products, Inc.

Alaska

AECOM

Amec Foster Wheeler

Applied Weather Associates, LLC

ASI Constructors, Inc.

Aubian Engineering Inc.

Barnard Construction Company, Inc.

Barr Engineering Co.

BDI

Canary Systems, Inc.

CARPI USA Inc

CDM Smith

Center Rock Inc.

COH Inc.

D'Appolonia

Dyrhoff Inc.

DYWIDAG Systems International (DSI)

Earth Reinforcement Testing, Inc. (ERTesting)

Emagineered Solutions, Inc.

FENSTERMAKER

Flo-2D Software, Inc.

Fugro Consultants Inc.

Gannett Fleming

Hayward Baker Inc.

HDR

hydroGEOPHYSICS Inc.

Hydroplus, Inc.

International Erosion Control Systems

Kleinfelder

Lemke Industrial Machine LLC

McMahon & Mann Consulting Engineers, P.C.

Mead & Hunt, Inc.

Mecan-Hydro

Michael Baker International

Mueser Rutledge Consulting Engineers

OBG

Parsons Brinckerhoff

Pro-ROV Services

QSP Packers, LLC

RST Instruments Ltd.

SAGE Engineers

Schnabel Engineering, Inc.

Stanley Consultants, Inc.

Stantec Consulting Services Inc.

T.Y. Lin International

Tectonic Engineering & Surveying Consultants P.C.

TREVIICOS

Vertical Access LLC

Vista Data Vision

WatershedGeo

Worthington Products, Inc.

Arizona

AECOM

Amec Foster Wheeler

Applied Weather Associates, LLC

ASI Constructors, Inc.

Aubian Engineering Inc.

Barnard Construction Company, Inc.

Barr Engineering Co.

BDI

Canary Systems, Inc.

CARPI USA Inc

CDM Smith

Center Rock Inc.
COH Inc.
D'Appolonia
Dewberry
DOWL
Dyrhoff Inc.
DYWIDAG Systems International
(DSI)
Earth Reinforcement Testing, Inc.
(ERTesting)
Emagineered Solutions, Inc.
FENSTERMAKER
Flo-2D Software, Inc.
Fugro Consultants Inc.

Gannett Fleming**Hayward Baker Inc.****HDR**

hydroGEOPHYSICS Inc.
Hydroplus, Inc.
International Erosion Control
Systems

Kleinfelder

Lemke Industrial Machine LLC
McCormick Taylor
McMahon & Mann Consulting
Engineers, P.C.
Mead & Hunt, Inc.

Mecan-Hydro
Michael Baker International
Mueser Rutledge Consulting
Engineers

OBG

Parsons Brinckerhoff
Pro-ROV Services
QSP Packers, LLC
RST Instruments Ltd.
S&ME, Inc.

SAGE Engineers

Schnabel Engineering, Inc.

Stanley Consultants, Inc.

Stantec Consulting Services Inc.

T.Y. Lin International
Tectonic Engineering & Surveying
Consultants P.C.

TREVIICOS

Vertical Access LLC
Vista Data Vision
WatershedGeo

Worthington Products, Inc.**Arkansas**

AECOM**Amec Foster Wheeler**

Applied Weather Associates, LLC

ASI Constructors, Inc.

Aubian Engineering Inc.

Barnard Construction**Company, Inc.**

Barr Engineering Co.

BDI

Canary Systems, Inc.

CARPI USA Inc**CDM Smith**

Center Rock Inc.

COH Inc.

D'Appolonia

Dewberry

DOWL

Dyrhoff Inc.

DYWIDAG Systems International
(DSI)

Earth Reinforcement Testing, Inc.
(ERTesting)

Emagineered Solutions, Inc.

FENSTERMAKER

Flo-2D Software, Inc.

Fugro Consultants Inc.

Gannett Fleming**Hayward Baker Inc.****HDR**

Henley-Johnston & Associates, Inc.
hydroGEOPHYSICS Inc.

Hydroplus, Inc.

International Erosion Control
Systems

Kleinfelder

Lemke Industrial Machine LLC
McMahon & Mann Consulting
Engineers, P.C.

Mead & Hunt, Inc.

Mecan-Hydro

Michael Baker International

Moretrench

Mueser Rutledge Consulting
Engineers

OBG

Parsons Brinckerhoff
Pro-ROV Services
QSP Packers, LLC
RST Instruments Ltd.

S&ME, Inc.

SAGE Engineers

Schnabel Engineering, Inc.

Stanley Consultants, Inc.

Stantec Consulting Services Inc.

T.Y. Lin International

Tectonic Engineering & Surveying
Consultants P.C.

TREVIICOS

Vertical Access LLC

Vista Data Vision

WatershedGeo

Worthington Products, Inc.**California**

AECOM**Amec Foster Wheeler**

Applied Weather Associates, LLC

ASI Constructors, Inc.

Aubian Engineering Inc.

Barnard Construction**Company, Inc.**

Barr Engineering Co.

BDI

Canary Systems, Inc.

CARPI USA Inc**CDM Smith**

Center Rock Inc.

COH Inc.

D'Appolonia

Dewberry

DOWL

Dyrhoff Inc.

DYWIDAG Systems International
(DSI)

Earth Reinforcement Testing, Inc.
(ERTesting)

Emagineered Solutions, Inc.

FENSTERMAKER

Flo-2D Software, Inc.

Fugro Consultants Inc.

Fuss & O'Neill, Inc.

Gannett Fleming**Hayward Baker Inc.****HDR**

hydroGEOPHYSICS Inc.

Hydroplus, Inc.

International Erosion Control
Systems

Kleinfelder

Lemke Industrial Machine LLC
McMahon & Mann Consulting
Engineers, P.C.

Mead & Hunt, Inc.

Mecan-Hydro

Michael Baker International

Mueser Rutledge Consulting
Engineers

OBG

Parsons Brinckerhoff

Pro-ROV Services

QSP Packers, LLC

RST Instruments Ltd.

SAGE Engineers

Schnabel Engineering, Inc.

Stanley Consultants, Inc.

Stantec Consulting Services Inc.

T.Y. Lin International

Tectonic Engineering & Surveying
Consultants P.C.

TREVIICOS

Vertical Access LLC

Vista Data Vision

WatershedGeo

Worthington Products, Inc.

Colorado

AECOM

Amec Foster Wheeler

Applied Weather Associates, LLC

ASI Constructors, Inc.

Aubian Engineering Inc.

**Barnard Construction
Company, Inc.**

Barr Engineering Co.

BDI

Canary Systems, Inc.

CARPI USA Inc

CDM Smith

Center Rock Inc.

COH Inc.

D'Appolonia

DOWL

Dyrhoff Inc.

DYWIDAG Systems International
(DSI)

Earth Reinforcement Testing, Inc.
(ERTesting)

Emagineered Solutions, Inc.

FENSTERMAKER

Flo-2D Software, Inc.

Fugro Consultants Inc.

Gannett Fleming

Hayward Baker Inc.

HDR

hydroGEOPHYSICS Inc.

Hydroplus, Inc.

International Erosion Control
Systems

Kleinfelder

Lemke Industrial Machine LLC

McMahon & Mann Consulting
Engineers, P.C.

Mead & Hunt, Inc.

Mecan-Hydro

Michael Baker International

Moretrench

Mueser Rutledge Consulting
Engineers

OBG

silver sponsor
DAM SAFETY 2015 Conference | visit us in Booth 311

BARR

dam engineering

studies
new facility design
modifications and rehabilitations
geotechnical, structural,
mechanical, electrical services

gates and hoists | spillways, embankments and powerhouses
FERC inspections, PFMA and RIDM
hydraulic, hydrologic, power generation studies | permitting

resourceful. naturally.®

Barr Engineering Co. 800.632.2277 www.barr.com

Parsons Brinckerhoff
 Pro-ROV Services
 QSP Packers, LLC
 RST Instruments Ltd.
 SAGE Engineers
Schnabel Engineering, Inc.
 Stanley Consultants, Inc.
Stantec Consulting Services Inc.
 T.Y. Lin International
 Tectonic Engineering & Surveying
 Consultants P.C.
TREVIICOS
 Vertical Access LLC
 Vista Data Vision
 WatershedGeo
Worthington Products, Inc.

Connecticut

AECOM

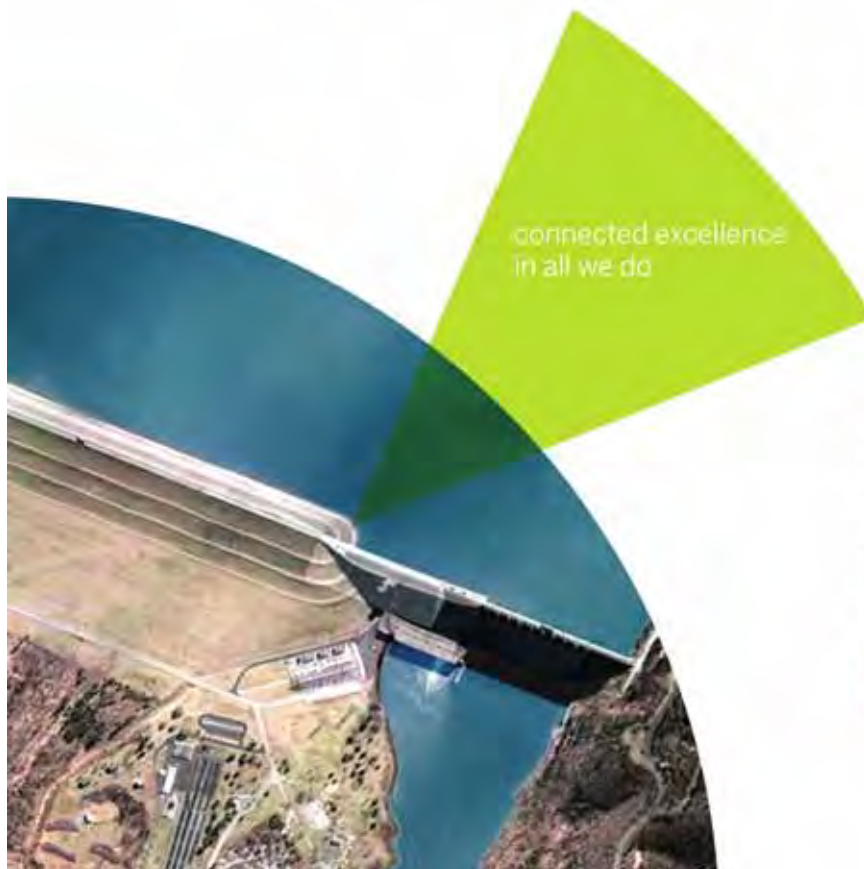
Amec Foster Wheeler
 Andrzejewski Engineering
 Applied Weather Associates, LLC
ASI Constructors, Inc.
 Aubian Engineering Inc.

**Barnard Construction
 Company, Inc.**

Barr Engineering Co.
 BDI
 Brayman Construction
 Canary Systems, Inc.
CARPI USA Inc
CDM Smith
 Center Rock Inc.
 COH Inc.
 D'Appolonia
 Dewberry
 Dyrhoff Inc.
 DYWIDAG Systems International
 (DSI)
 Earth Reinforcement Testing, Inc.
 (ERTesting)
 Emagineered Solutions, Inc.
 FENSTERMAKER
 Flo-2D Software, Inc.
 Fugro Consultants Inc.
 Fuss & O'Neill, Inc.
 Gomez and Sullivan Engineers, DPC
Gannett Fleming
Hayward Baker Inc.

HDR

Hutton Construction
 hydroGEOPHYSICS Inc.
 Hydroplus, Inc.
 International Erosion Control
 Systems
Kleinfelder
 Lemke Industrial Machine LLC
 McMahan & Mann Consulting
 Engineers, P.C.
 Mead & Hunt, Inc.
 Mecan-Hydro
 Michael Baker International
 Moretrench
 Mueser Rutledge Consulting
 Engineers
OBG
 Parsons Brinckerhoff
 Princeton Hydro
 Pro-ROV Services
 QSP Packers, LLC
 RST Instruments Ltd.
 SAGE Engineers
Schnabel Engineering, Inc.
 Stanley Consultants, Inc.







Delivering on our promises

We're a trusted partner, committed to meeting our customers' every challenge – no matter how complex.

Amec Foster Wheeler provides dam and levee safety consulting to meet our clients' water resource needs.

For more information please contact:
 Larry Sample at 785-272-6830

-  twitter.com/amec_fw
-  linkedin.com/company/amecfw
-  youtube.com/user/amecfw
-  facebook.com/amecfw

Oil & Gas | Clean Energy |
 Environment & Infrastructure | Mining

amecfw.com

Stantec Consulting Services Inc.
 T.Y. Lin International
 Tata & Howard, Inc.
 Tectonic Engineering & Surveying
 Consultants P.C.
TREVIICOS
 Vertical Access LLC
 Vista Data Vision
 WatershedGeo
Worthington Products, Inc.
 WSP

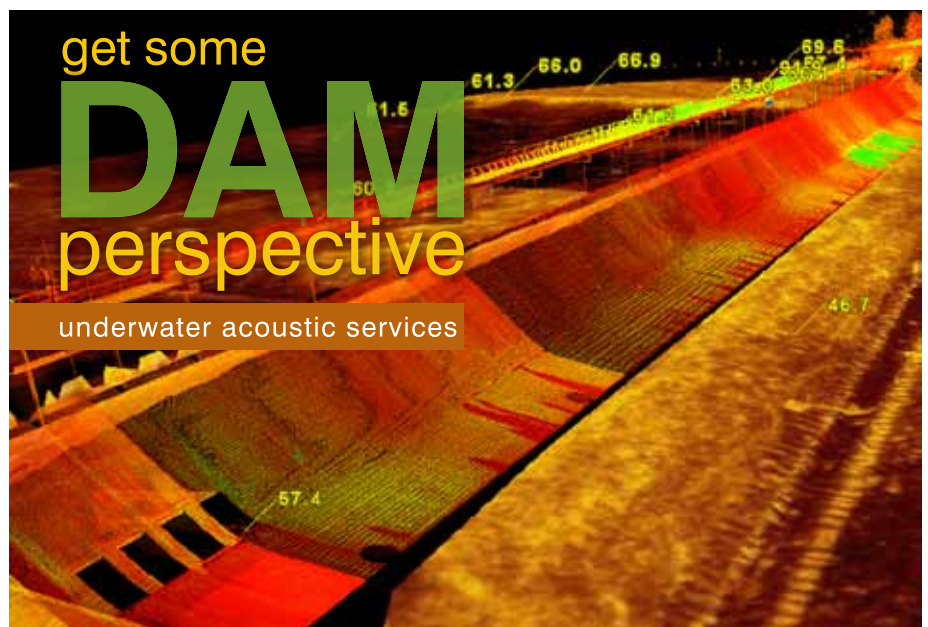
Delaware

AECOM

Amec Foster Wheeler
 Applied Weather Associates, LLC
ASI Constructors, Inc.
 Aubian Engineering Inc.
**Barnard Construction
 Company, Inc.**
 Barr Engineering Co.
 BDI
 Brayman Construction
 Canary Systems, Inc.
CARPI USA Inc
CDM Smith
 Center Rock Inc.
 COH Inc.
 D'Appolonia
 Dewberry
 Dyrhoff Inc.
 DYWIDAG Systems International
 (DSI)
 Earth Reinforcement Testing, Inc.
 (ERTesting)
 Emagineered Solutions, Inc.
 FENSTERMAKER
 Flo-2D Software, Inc.
 Fugro Consultants Inc.
 Gomez and Sullivan Engineers, DPC
Gannett Fleming
Hayward Baker Inc.
HDR
 hydroGEOPHYSICS Inc.
 Hydroplus, Inc.
 International Erosion Control
 Systems
Kleinfelder
 Lemke Industrial Machine LLC

McCormick Taylor
 McMahon & Mann Consulting
 Engineers, P.C.
 Mead & Hunt, Inc.
 Mecan-Hydro
 Michael Baker International
 Moretrench
 Mueser Rutledge Consulting
 Engineers
OBG
 Parsons Brinckerhoff
 Pro-ROV Services
 QSP Packers, LLC

RST Instruments Ltd.
 SAGE Engineers
Schnabel Engineering, Inc.
 Stanley Consultants, Inc.
Stantec Consulting Services Inc.
 T.Y. Lin International
 Tectonic Engineering & Surveying
 Consultants P.C.
TREVIICOS
 Vertical Access LLC
 Vista Data Vision
 WatershedGeo
Worthington Products, Inc.



scour & erosion investigations
 dam structure inspections
 trash rack inspections
 intake inspections
 obstruction & hazard inspections
 bulkhead inspections
 penstock & conduit inspections
 heel & toe inspections



Ken LaBry, Market Leader, Underwater Acoustics Group
 337.237.2200, ext. 1189 kenl@fenstermaker.com

Rene Escuriex, Market Leader, Business Development
 337.237.2200, ext. 1198 rene@fenstermaker.com



www.fenstermaker.com

Florida

AECOM

Amec Foster Wheeler

Applied Weather Associates, LLC

ASI Constructors, Inc.

Aubian Engineering Inc.

Barnard Construction

Company, Inc.

Barr Engineering Co.

BDI

Canary Systems, Inc.

CARPI USA Inc

CDM Smith

Center Rock Inc.

COH Inc.

D'Appolonia

Dewberry

Dyrhoff Inc.

DYWIDAG Systems International
(DSI)

Earth Reinforcement Testing, Inc.
(ERTesting)

Emagineered Solutions, Inc.

Engineered Restorations, Inc.

FENSTERMAKER

Flo-2D Software, Inc.

Fugro Consultants Inc.

Gannett Fleming

Hayward Baker Inc.

HDR

hydroGEOPHYSICS Inc.

Hydroplus, Inc.

International Erosion Control
Systems

Kleinfelder

Lemke Industrial Machine LLC

McMahon & Mann Consulting
Engineers, P.C.

Mead & Hunt, Inc.

Mecan-Hydro

Michael Baker International

Moretrench

Mueser Rutledge Consulting
Engineers

OBG

Parsons Brinckerhoff

Pro-ROV Services

QSP Packers, LLC

RST Instruments Ltd.

S&ME, Inc.

SAGE Engineers

Schnabel Engineering, Inc.

Stanley Consultants, Inc.

Stantec Consulting Services Inc.

T.Y. Lin International

Tectonic Engineering & Surveying
Consultants P.C.

TREVIICOS

Vertical Access LLC

Vista Data Vision

WatershedGeo

Worthington Products, Inc.

WSP

Georgia

AECOM

Amec Foster Wheeler

Applied Weather Associates, LLC

ASI Constructors, Inc.



Experts in PMP and Rainfall Analyses

Experienced Staff of Hydrometeorologists and GIS Specialists

Probable Maximum Precipitation (PMP) Studies

- PMP studies accepted by numerous state dam safety offices, FERC, NRCS, USACE, USBR
 - More than 90 site-specific, regional, and statewide PMP studies completed since 1996

Rainfall Analyses Using the Storm Precipitation Analysis System (SPAS)

- Hydrology model calibration and validation
- Storm identification and quantification for risk analyses
- Real-Time rainfall analysis and forecasting
- Input for runoff/inflow modeling and forecasting
 - More than 500 storm analyses completed since 2002
 - Calibrated NEXRAD weather radar rainfall analysis

Forensic Meteorological Analyses and Expert Testimony

Bill Kappel, President/Chief Meteorologist

PO Box 175

Monument, CO 80132

(719) 488-4311

Website: www.appliedweatherassociates.com

e-mail: billkappel@appliedweatherassociates.com

Aubian Engineering Inc.
Barnard Construction Company, Inc.
 Barr Engineering Co.
 BDI
 Canary Systems, Inc.
CARPI USA Inc
CDM Smith
 Center Rock Inc.
 COH Inc.
 D'Appolonia
 Dewberry
 Dyrhoff Inc.
 DYWIDAG Systems International (DSI)
 Earth Reinforcement Testing, Inc. (ERTesting)
 Emagineered Solutions, Inc.
 Engineered Restorations, Inc.
 FENSTERMAKER
 Flo-2D Software, Inc.
 Fugro Consultants Inc.
Gannett Fleming
Hayward Baker Inc.
HDR
 hydroGEOPHYSICS Inc.
 Hydroplus, Inc.
 International Erosion Control Systems
Kleinfelder
 Lemke Industrial Machine LLC
 McMahon & Mann Consulting Engineers, P.C.
 Mead & Hunt, Inc.
 Mecan-Hydro
 Michael Baker International
 Moretrench
 Mueser Rutledge Consulting Engineers
OBG
 Parsons Brinckerhoff
 Pro-ROV Services
 QSP Packers, LLC
 RST Instruments Ltd.
 S&ME, Inc.
 SAGE Engineers
Schnabel Engineering, Inc.
 Stanley Consultants, Inc.
Stantec Consulting Services Inc.
 T.Y. Lin International

Tectonic Engineering & Surveying Consultants P.C.
TREVIICOS
 Vertical Access LLC
 Vista Data Vision
 WatershedGeo
Worthington Products, Inc.

Hawaii

AECOM
Amec Foster Wheeler
 Applied Weather Associates, LLC
ASI Constructors, Inc.

Aubian Engineering Inc.
Barnard Construction Company, Inc.
 Barr Engineering Co.
 BDI
 Canary Systems, Inc.
CARPI USA Inc
CDM Smith
 Center Rock Inc.
 COH Inc.
 D'Appolonia
 Dyrhoff Inc.
 DYWIDAG Systems International (DSI)

International Erosion Control Systems Inc.



Phone: 855-768-1420

www.iecsusa.com

3030 N. Rocky Point Drive Suite 150, Tampa FL 33607

US Sales: David Fairley: dfairley@iecsusa.com



**OFFERING COST
 EFFECTIVE
 MOBILE MANUFACTURING
 SINCE 1984**

Riverbank Protection,
 Lakeshore Protection,
 Landfill Drainage Systems,
 Boat Ramps, Access Roads,
 Dike & Dam Overflow Protection.



Earth Reinforcement Testing, Inc.
(ERTesting)

Emagineered Solutions, Inc.
FENSTERMAKER

Flo-2D Software, Inc.
Fugro Consultants Inc.

Gannett Fleming

Hayward Baker Inc.

HDR

hydroGEOPHYSICS Inc.

Hydroplus, Inc.

International Erosion Control
Systems

Kleinfelder

Lemke Industrial Machine LLC

McMahon & Mann Consulting
Engineers, P.C.

Mead & Hunt, Inc.

Mecan-Hydro

Michael Baker International

Mueser Rutledge Consulting
Engineers

OBG

Parsons Brinckerhoff

Pro-ROV Services

QSP Packers, LLC

RST Instruments Ltd.

SAGE Engineers

Schnabel Engineering, Inc.

Stanley Consultants, Inc.

Stantec Consulting Services Inc.

T.Y. Lin International

Tectonic Engineering & Surveying
Consultants P.C.

TREVIICOS

Vertical Access LLC

Vista Data Vision

WatershedGeo

Worthington Products, Inc.

Idaho

AECOM

Amec Foster Wheeler

Applied Weather Associates, LLC

ASI Constructors, Inc.

Aubian Engineering Inc.

Barnard Construction

Company, Inc.

Barr Engineering Co.

BDI

Canary Systems, Inc.

CARPI USA Inc

CDM Smith

Center Rock Inc.

COH Inc.

D'Appolonia

DOWL

Dyrhoff Inc.

DYWIDAG Systems International
(DSI)

Earth Reinforcement Testing, Inc.
(ERTesting)

Emagineered Solutions, Inc.

FENSTERMAKER

Flo-2D Software, Inc.

Fugro Consultants Inc.

Gannett Fleming

Hayward Baker Inc.

HDR

hydroGEOPHYSICS Inc.

Hydroplus, Inc.

International Erosion Control
Systems

Kleinfelder

Lemke Industrial Machine LLC

McMahon & Mann Consulting
Engineers, P.C.

Mead & Hunt, Inc.

Mecan-Hydro

Michael Baker International

Mueser Rutledge Consulting
Engineers

OBG

Parsons Brinckerhoff

Pro-ROV Services

QSP Packers, LLC

RST Instruments Ltd.

SAGE Engineers

Schnabel Engineering, Inc.

Stanley Consultants, Inc.

Stantec Consulting Services Inc.

T.Y. Lin International

Tectonic Engineering & Surveying
Consultants P.C.

TREVIICOS

Vertical Access LLC

Vista Data Vision

WatershedGeo

Worthington Products, Inc.

Illinois

AECOM

Amec Foster Wheeler

Applied Weather Associates, LLC

ASI Constructors, Inc.

Aubian Engineering Inc.

Barnard Construction

Company, Inc.

Barr Engineering Co.

BDI

Canary Systems, Inc.

CARPI USA Inc

CDM Smith

Center Rock Inc.

COH Inc.

D'Appolonia

Dewberry

Dyrhoff Inc.

DYWIDAG Systems International
(DSI)

Earth Reinforcement Testing, Inc.
(ERTesting)

Emagineered Solutions, Inc.

FENSTERMAKER

Flo-2D Software, Inc.

Fugro Consultants Inc.

Gannett Fleming

Hayward Baker Inc.

HDR

hydroGEOPHYSICS Inc.

Hydroplus, Inc.

International Erosion Control
Systems

Kleinfelder

Lemke Industrial Machine LLC

McMahon & Mann Consulting
Engineers, P.C.

Mead & Hunt, Inc.

Mecan-Hydro

Michael Baker International

Moretrench

Mueser Rutledge Consulting
Engineers

OBG

Parsons Brinckerhoff

Pro-ROV Services

QSP Packers, LLC

RST Instruments Ltd.

SAGE Engineers

Schnabel Engineering, Inc.

Stanley Consultants, Inc.
Stantec Consulting Services Inc.
T.Y. Lin International
Tectonic Engineering & Surveying
Consultants P.C.
TREVIICOS
Vertical Access LLC
Vista Data Vision
WatershedGeo
Worthington Products, Inc.

Indiana

AECOM
Amec Foster Wheeler
Applied Weather Associates, LLC
ASI Constructors, Inc.
Aubian Engineering Inc.
**Barnard Construction
Company, Inc.**
Barr Engineering Co.
BDI
Brayman Construction
Canary Systems, Inc.
CARPI USA Inc

CDM Smith
Center Rock Inc.
COH Inc.
D'Appolonia
Dyrhoff Inc.
DYWIDAG Systems International
(DSI)
Earth Reinforcement Testing, Inc.
(ERTesting)
Emagineered Solutions, Inc.
FENSTERMAKER
Flo-2D Software, Inc.
Fugro Consultants Inc.
**Gannett Fleming
Hayward Baker Inc.**
HDR
hydroGEOPHYSICS Inc.
Hydroplus, Inc.
International Erosion Control
Systems
Kleinfelder
Lemke Industrial Machine LLC
McMahon & Mann Consulting
Engineers, P.C.

Mead & Hunt, Inc.
Mecan-Hydro
Michael Baker International
Moretrench
Mueser Rutledge Consulting
Engineers
OBG
Parsons Brinckerhoff
Pro-ROV Services
QSP Packers, LLC
RST Instruments Ltd.
S&ME, Inc.
SAGE Engineers
Schnabel Engineering, Inc.
Stanley Consultants, Inc.
Stantec Consulting Services Inc.
T.Y. Lin International
Tectonic Engineering & Surveying
Consultants P.C.
TREVIICOS
Vertical Access LLC
Vista Data Vision
WatershedGeo
Worthington Products, Inc.

Dyrhoff Inc.

Specialists in the design and supply of inflatable rubber dams and flashboard replacement systems
Dyrhoff have been involved in the design and supply of over 100 rubber dams and pneumatically-operated gates for applications including hydropower, water supply, flood management and in-line waste water storage. We also specialise in the replacement of Fabridam and Bridgestone inflatable dams.
Whatever your project, we will offer the best solution.



Dyrhoff Inc.
West Boylston, MA, USA
office@dyrhoff.com
Tel. +1 508 7550440

Dyrhoff Limited
Folkestone, Kent, UK
office@dyrhoff.co.uk
Tel. +44 1303 275900

www.dyrhoff.com

Iowa

AECOM

Amec Foster Wheeler

Applied Weather Associates, LLC

ASI Constructors, Inc.

Aubian Engineering Inc.

Barnard Construction

Company, Inc.

Barr Engineering Co.

BDI

Canary Systems, Inc.

CARPI USA Inc

CDM Smith

Center Rock Inc.

COH Inc.

D'Appolonia

Dewberry

Dyrhoff Inc.

DYWIDAG Systems International
(DSI)

Earth Reinforcement Testing, Inc.
(ERTesting)

Emagineered Solutions, Inc.

FENSTERMAKER

Flo-2D Software, Inc.

Fugro Consultants Inc.

Gannett Fleming

Hayward Baker Inc.

HDR

hydroGEOPHYSICS Inc.

Hydroplus, Inc.

International Erosion Control
Systems

Kleinfelder

Lemke Industrial Machine LLC

McMahon & Mann Consulting
Engineers, P.C.

Mead & Hunt, Inc.

Mecan-Hydro

Michael Baker International

Moretrench

Mueser Rutledge Consulting
Engineers

OBG

Parsons Brinckerhoff

Pro-ROV Services

QSP Packers, LLC

RST Instruments Ltd.

SAGE Engineers

Schnabel Engineering, Inc.

Stanley Consultants, Inc.

Stantec Consulting Services Inc.

T.Y. Lin International

Tectonic Engineering & Surveying
Consultants P.C.

TREVIICOS

Vertical Access LLC

Vista Data Vision

WatershedGeo

Worthington Products, Inc.

Kansas

AECOM

Amec Foster Wheeler

Applied Weather Associates, LLC

ASI Constructors, Inc.

Aubian Engineering Inc.

Barnard Construction

Company, Inc.

Barr Engineering Co.

BDI

Canary Systems, Inc.

CARPI USA Inc

CDM Smith

Center Rock Inc.

COH Inc.

D'Appolonia

Dewberry

Dyrhoff Inc.

DYWIDAG Systems International
(DSI)

Earth Reinforcement Testing, Inc.
(ERTesting)

Emagineered Solutions, Inc.

FENSTERMAKER

Flo-2D Software, Inc.

Fugro Consultants Inc.

Gannett Fleming

Hayward Baker Inc.

HDR

hydroGEOPHYSICS Inc.

Hydroplus, Inc.

International Erosion Control
Systems

Kleinfelder

Lemke Industrial Machine LLC

McMahon & Mann Consulting
Engineers, P.C.

Mead & Hunt, Inc.

Mecan-Hydro

Michael Baker International

Moretrench

Mueser Rutledge Consulting
Engineers

OBG

Parsons Brinckerhoff

Pro-ROV Services

QSP Packers, LLC

RST Instruments Ltd.

SAGE Engineers

Schnabel Engineering, Inc.

Stanley Consultants, Inc.

Stantec Consulting Services Inc.

T.Y. Lin International

Tectonic Engineering & Surveying
Consultants P.C.

TREVIICOS

Vertical Access LLC

Vista Data Vision

WatershedGeo

Worthington Products, Inc.

Kentucky

AECOM

Amec Foster Wheeler

Applied Weather Associates, LLC

ASI Constructors, Inc.

Aubian Engineering Inc.

Barnard Construction

Company, Inc.

Barr Engineering Co.

BDI

Brayman Construction

Canary Systems, Inc.

CARPI USA Inc

CDM Smith

Center Rock Inc.

COH Inc.

D'Appolonia

Dewberry

Dyrhoff Inc.

DYWIDAG Systems International
(DSI)

Earth Reinforcement Testing, Inc.
(ERTesting)

Emagineered Solutions, Inc.

FENSTERMAKER

Flo-2D Software, Inc.
Fugro Consultants Inc.
Gomez and Sullivan Engineers, DPC
Gannett Fleming
Hayward Baker Inc.
HDR
hydroGEOPHYSICS Inc.
Hydroplus, Inc.
International Erosion Control
Systems
Kleinfelder
Lemke Industrial Machine LLC
McMahon & Mann Consulting
Engineers, P.C.
Mead & Hunt, Inc.
Mecan-Hydro
Michael Baker International
Moretrench
Mueser Rutledge Consulting
Engineers
OBG
Parsons Brinckerhoff
Pro-ROV Services
QSP Packers, LLC

RST Instruments Ltd.
S&ME, Inc.
SAGE Engineers
Schnabel Engineering, Inc.
Stanley Consultants, Inc.
Stantec Consulting Services Inc.
T.Y. Lin International
Tectonic Engineering & Surveying
Consultants P.C.
TREVIICOS
Vertical Access LLC
Vista Data Vision
WatershedGeo
Worthington Products, Inc.

Louisiana

AECOM
Amec Foster Wheeler
Applied Weather Associates, LLC
ASI Constructors, Inc.
Aubian Engineering Inc.
**Barnard Construction
Company, Inc.**
Barr Engineering Co.

BDI
Canary Systems, Inc.
CARPI USA Inc
CDM Smith
Center Rock Inc.
COH Inc.
D'Appolonia
Dewberry
Dyrhoff Inc.
DYWIDAG Systems International
(DSI)
Earth Reinforcement Testing, Inc.
(ERTesting)
Emagineered Solutions, Inc.
FENSTERMAKER
Flo-2D Software, Inc.
Fugro Consultants Inc.
Gannett Fleming
Hayward Baker Inc.
HDR
hydroGEOPHYSICS Inc.
Hydroplus, Inc.
International Erosion Control
Systems



QSP Packers, LLC

Quality - Service - Price

Serving Your Complete
Packer Needs

Contact QSP with all your
Packer questions!!

- ♦ **INFLATABLE PACKERS** - Pressure Grout, Wireline, Environmental, Water Well. Custom Sizes and Fabrication available.
- ♦ **MECHANICAL PACKERS** - Low Pressure Grout, Freeze Plugs, Custom Applications.

Phone: 253-770-0315 or 888-572-2537

Fax #: 253-770-0327

Email: info@QSPPackers.com

Web: www.QSPPackers.com

Kleinfelder

Lemke Industrial Machine LLC
 McMahon & Mann Consulting
 Engineers, P.C.
 Mead & Hunt, Inc.
 Mecan-Hydro
 Michael Baker International
 Moretrench
 Mueser Rutledge Consulting
 Engineers

OBG

Parsons Brinckerhoff
 Pro-ROV Services
 QSP Packers, LLC
 RST Instruments Ltd.
 S&ME, Inc.
 SAGE Engineers

Schnabel Engineering, Inc.

Stanley Consultants, Inc.

Stantec Consulting Services Inc.

T.Y. Lin International
 Tectonic Engineering & Surveying
 Consultants P.C.

TREVIICOS

Vertical Access LLC
 Vista Data Vision
 WatershedGeo

Worthington Products, Inc.**Maine****AECOM****Amec Foster Wheeler**

Applied Weather Associates, LLC

ASI Constructors, Inc.

Aubian Engineering Inc.

Barnard Construction**Company, Inc.**

Barr Engineering Co.

BDI

Canary Systems, Inc.

CARPI USA Inc**CDM Smith**

Center Rock Inc.

COH Inc.

D'Appolonia

Dyrhoff Inc.

DYWIDAG Systems International
 (DSI)

Earth Reinforcement Testing, Inc.
 (ERTesting)

Emagineered Solutions, Inc.

FENSTERMAKER

Flo-2D Software, Inc.

Fugro Consultants Inc.

Fuss & O'Neill, Inc.

Gomez and Sullivan Engineers, DPC

Gannett Fleming**Hayward Baker Inc.****HDR**

hydroGEOPHYSICS Inc.

Hydroplus, Inc.

International Erosion Control
 Systems

Kleinfelder

Lemke Industrial Machine LLC

McMahon & Mann Consulting
 Engineers, P.C.

Mead & Hunt, Inc.

Mecan-Hydro

Michael Baker International

Moretrench

Mueser Rutledge Consulting
 Engineers

OBG

Parsons Brinckerhoff

Pro-ROV Services

QSP Packers, LLC

RST Instruments Ltd.

SAGE Engineers

Schnabel Engineering, Inc.

Stanley Consultants, Inc.

Stantec Consulting Services Inc.

T.Y. Lin International

Tectonic Engineering & Surveying
 Consultants P.C.

TREVIICOS

Vertical Access LLC

Vista Data Vision

WatershedGeo

Worthington Products, Inc.

WSP

Maryland**AECOM****Amec Foster Wheeler**

Applied Weather Associates, LLC

ASI Constructors, Inc.

Aubian Engineering Inc.

Barnard Construction**Company, Inc.**

Barr Engineering Co.

BDI

Brayman Construction

Canary Systems, Inc.

CARPI USA Inc**CDM Smith**

Center Rock Inc.

COH Inc.

CME Engineering

D'Appolonia

Dewberry

Dyrhoff Inc.

DYWIDAG Systems International
 (DSI)

Earth Reinforcement Testing, Inc.
 (ERTesting)

Emagineered Solutions, Inc.

FENSTERMAKER

Flo-2D Software, Inc.

Fugro Consultants Inc.

Gomez and Sullivan Engineers, DPC

Gannett Fleming**Hayward Baker Inc.****HDR**

hydroGEOPHYSICS Inc.

Hydroplus, Inc.

International Erosion Control
 Systems

Kleinfelder

Lemke Industrial Machine LLC

McCormick Taylor

McMahon & Mann Consulting
 Engineers, P.C.

Mead & Hunt, Inc.

Mecan-Hydro

Michael Baker International

Moretrench

Mueser Rutledge Consulting
 Engineers

OBG

Parsons Brinckerhoff

Pro-ROV Services

QSP Packers, LLC

RST Instruments Ltd.

SAGE Engineers

Schnabel Engineering, Inc.

Stanley Consultants, Inc.

Stantec Consulting Services Inc.

T.Y. Lin International

Tectonic Engineering & Surveying
Consultants P.C.

TREVIICOS

Vertical Access LLC

Vista Data Vision

WatershedGeo

Worthington Products, Inc.

WSP

Kleinfelder

Lemke Industrial Machine LLC

McMahon & Mann Consulting
Engineers, P.C.

Mead & Hunt, Inc.

Mecan-Hydro

Michael Baker International

Moretrench

Mueser Rutledge Consulting
Engineers

OBG

Parsons Brinckerhoff

Pro-ROV Services

QSP Packers, LLC

RST Instruments Ltd.

SAGE Engineers

Schnabel Engineering, Inc.

Stanley Consultants, Inc.

Stantec Consulting Services Inc.

T.Y. Lin International

Tata & Howard, Inc.

Tectonic Engineering & Surveying
Consultants P.C.

TREVIICOS

Vertical Access LLC

Vista Data Vision

Massachusetts

AECOM

Amec Foster Wheeler

Applied Weather Associates, LLC

ASI Constructors, Inc.

Aubian Engineering Inc.

**Barnard Construction
Company, Inc.**

Barr Engineering Co.

BDI

Brayman Construction

Canary Systems, Inc.

CARPI USA Inc

CDM Smith

Center Rock Inc.

COH Inc.

D'Appolonia

Dewberry

Dyrhoff Inc.

DYWIDAG Systems International
(DSI)

Earth Reinforcement Testing, Inc.
(ERTesting)

Emagineered Solutions, Inc.

FENSTERMAKER

Flo-2D Software, Inc.

Fugro Consultants Inc.

Fuss & O'Neill, Inc.

Gomez and Sullivan Engineers, DPC

Gannett Fleming

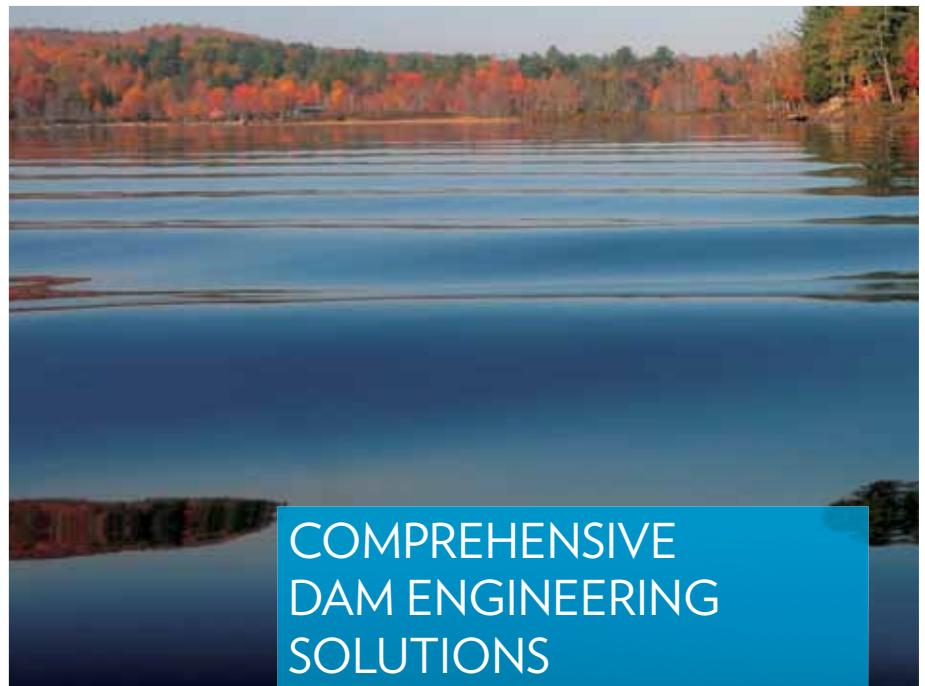
Hayward Baker Inc.

HDR

hydroGEOPHYSICS Inc.

Hydroplus, Inc.

International Erosion Control
Systems



**COMPREHENSIVE
DAM ENGINEERING
SOLUTIONS**

WSP is one of the nation's leading professional services firms, working with governments, businesses, architects and planners and providing integrated solutions across many disciplines. Our dam engineering services include:

- ↗ Dam Safety and Inspection
- ↗ Dam Analysis, Design and Repair
- ↗ Hydrology and Hydraulic Analysis
- ↗ Geotechnical and Seismic Analysis
- ↗ Instrumentation and Monitoring
- ↗ Watershed Management
- ↗ Permitting and Construction Management
- ↗ Geospatial and Survey Services



Contact:
Allan Estivalet, PE
T: 914 449 9110
allan.estivalet@wspgroup.com
www.wspgroup.com/usa



WatershedGeo
Worthington Products, Inc.
WSP

Michigan

AECOM

Amec Foster Wheeler

Applied Weather Associates, LLC

ASI Constructors, Inc.

Aubian Engineering Inc.

Barnard Construction Company, Inc.

Barr Engineering Co.

Brayman Construction

BDI

Canary Systems, Inc.

CARPI USA Inc

CDM Smith

Center Rock Inc.

COH Inc.

D'Appolonia

Dyrhoff Inc.

DYWIDAG Systems International
(DSI)

Earth Reinforcement Testing, Inc.
(ERTesting)

Emagineered Solutions, Inc.

FENSTERMAKER

Flo-2D Software, Inc.

Fugro Consultants Inc.

Gannett Fleming

Gomez and Sullivan Engineers, DPC

Hayward Baker Inc.

HDR

hydroGEOPHYSICS Inc.

Hydroplus, Inc.

International Erosion Control
Systems

Kleinfelder

Lemke Industrial Machine LLC

McMahon & Mann Consulting
Engineers, P.C.

Mead & Hunt, Inc.

Mecan-Hydro

Michael Baker International

Moretrench

Mueser Rutledge Consulting
Engineers

OBG

Parsons Brinckerhoff

Pro-ROV Services

QSP Packers, LLC

RST Instruments Ltd.

SAGE Engineers

Schnabel Engineering, Inc.

Stanley Consultants, Inc.

Stantec Consulting Services Inc.

T.Y. Lin International

Tectonic Engineering & Surveying
Consultants P.C.

TREVIICOS

Vertical Access LLC

Vista Data Vision

WatershedGeo

Worthington Products, Inc.

Minnesota

AECOM

Amec Foster Wheeler

Applied Weather Associates, LLC

ASI Constructors, Inc.

Aubian Engineering Inc.

Barnard Construction Company, Inc.

Barr Engineering Co.

BDI

Canary Systems, Inc.

CARPI USA Inc

CDM Smith

Center Rock Inc.

COH Inc.

D'Appolonia

Dyrhoff Inc.

DYWIDAG Systems International
(DSI)

Earth Reinforcement Testing, Inc.
(ERTesting)

Emagineered Solutions, Inc.

FENSTERMAKER

Flo-2D Software, Inc.

Fugro Consultants Inc.

Gannett Fleming

Gomez and Sullivan Engineers,
DPC

Hayward Baker Inc.

HDR

hydroGEOPHYSICS Inc.

Hydroplus, Inc.

International Erosion Control
Systems

Kleinfelder

Lemke Industrial Machine LLC

McMahon & Mann Consulting
Engineers, P.C.

Mead & Hunt, Inc.

Mecan-Hydro

Michael Baker International

Moretrench

Mueser Rutledge Consulting
Engineers

OBG

Parsons Brinckerhoff

Pro-ROV Services

QSP Packers, LLC

RST Instruments Ltd.

SAGE Engineers

Schnabel Engineering, Inc.

Stanley Consultants, Inc.

Stantec Consulting Services Inc.

T.Y. Lin International

Tectonic Engineering & Surveying
Consultants P.C.

TREVIICOS

Vertical Access LLC

Vista Data Vision

WatershedGeo

Worthington Products, Inc.

Mississippi

AECOM

Amec Foster Wheeler

Applied Weather Associates, LLC

ASI Constructors, Inc.

Aubian Engineering Inc.

Barnard Construction Company, Inc.

Barr Engineering Co.

BDI

Brayman Construction

Canary Systems, Inc.

CARPI USA Inc

CDM Smith

Center Rock Inc.

COH Inc.

D'Appolonia

Dewberry

Dyrhoff Inc.

DYWIDAG Systems International (DSI)
 Earth Reinforcement Testing, Inc. (ERTesting)
 Emagineered Solutions, Inc.
 FENSTERMAKER
 Flo-2D Software, Inc.
 Fugro Consultants Inc.
Gannett Fleming
Hayward Baker Inc.
HDR
 hydroGEOPHYSICS Inc.
 Hydroplus, Inc.
 International Erosion Control Systems
Kleinfelder
 Lemke Industrial Machine LLC
 McMahon & Mann Consulting Engineers, P.C.
 Mead & Hunt, Inc.
 Mecan-Hydro
 Michael Baker International
 Moretrench
 Mueser Rutledge Consulting Engineers


OBG
 Parsons Brinckerhoff
 Pro-ROV Services
 QSP Packers, LLC
 RST Instruments Ltd.
 S&ME, Inc.
 SAGE Engineers
Schnabel Engineering, Inc.
 Stanley Consultants, Inc.
Stantec Consulting Services Inc.
 T.Y. Lin International
 Tectonic Engineering & Surveying Consultants P.C.
TREVIICOS
 Vertical Access LLC
 Vista Data Vision
 WatershedGeo
Worthington Products, Inc.

Missouri

AECOM
Amec Foster Wheeler
 Applied Weather Associates, LLC
ASI Constructors, Inc.

Aubian Engineering Inc.
Barnard Construction Company, Inc.
 Barr Engineering Co.
 BDI
 Canary Systems, Inc.
CARPI USA Inc
CDM Smith
 Center Rock Inc.
 COH Inc.
 D'Appolonia
 Dewberry
 Dyrhoff Inc.
 DWIDAG Systems International (DSI)
 Earth Reinforcement Testing, Inc. (ERTesting)
 Emagineered Solutions, Inc.
 FENSTERMAKER
 Flo-2D Software, Inc.
 Fugro Consultants Inc.
Gannett Fleming
Hayward Baker Inc.
HDR
 hydroGEOPHYSICS Inc.

Princeton Hydro



Scientists, Engineers and Geotechnical Experts providing

Experience, Expertise, and Excellence
 for all your **Water, Soil and Natural Resource** needs.



Princeton Hydro's staff have been involved in over 100 dam projects.




We offer expertise on a full range of services including dam restoration and repair, the investigation and implementation of dam removal, and the creation of innovative fishways.

Princeton Hydro has been dedicated to the restoration and protection of our valuable water resources and ecological systems since we were founded in 1998.

PrincetonHydro.com
 info@PrincetonHydro.com
 t. 908.237.5660
 f. 908.237.5666

AMRL and US Army Corps of Engineers Laboratory Accreditation

Find us on  

Hydroplus, Inc.
International Erosion Control
Systems

Kleinfelder

Lemke Industrial Machine LLC
McMahon & Mann Consulting
Engineers, P.C.

Mead & Hunt, Inc.

Mecan-Hydro

Michael Baker International
Moretrench

Mueser Rutledge Consulting
Engineers

OBG

Parsons Brinckerhoff

Pro-ROV Services

QSP Packers, LLC

RST Instruments Ltd.

SAGE Engineers

Schnabel Engineering, Inc.

Stanley Consultants, Inc.

Stantec Consulting Services Inc.

T.Y. Lin International

Tectonic Engineering & Surveying
Consultants P.C.

TREVIICOS

Vertical Access LLC

Vista Data Vision

WatershedGeo

Worthington Products, Inc.

Montana

AECOM

Amec Foster Wheeler

Applied Weather Associates, LLC

ASI Constructors, Inc.

Aubian Engineering Inc.

**Barnard Construction
Company, Inc.**

Barr Engineering Co.

BDI

Canary Systems, Inc.

CARPI USA Inc

CDM Smith

Center Rock Inc.

COH Inc.

D'Appolonia

DOWL

Dyrhoff Inc.

DYWIDAG Systems International
(DSI)

Earth Reinforcement Testing, Inc.
(ERTesting)

Emagineered Solutions, Inc.

FENSTERMAKER

Flo-2D Software, Inc.

Fugro Consultants Inc.

Gannett Fleming

Hayward Baker Inc.

HDR

hydroGEOPHYSICS Inc.

Hydroplus, Inc.

International Erosion Control
Systems

Kleinfelder

Lemke Industrial Machine LLC

McMahon & Mann Consulting
Engineers, P.C.

Mead & Hunt, Inc.

Mecan-Hydro

DAMS & LEVEES

COMPLETE GROUND MODIFICATION SOLUTIONS
FOR CONSTRUCTION AND REMEDIATION

- ◆ Overturning and Slide Stabilization
- ◆ Foundation Improvement
- ◆ Seepage Cut-Off
- ◆ Liquefaction and Lateral Spreading Mitigation
- ◆ Sinkhole Stabilization

**HAYWARD
BAKER**

Geotechnical Construction



800-456-6548

www.HaywardBaker.com

THINK SAFE



GROUTING

GROUND IMPROVEMENT

EARTH RETENTION

STRUCTURAL SUPPORT

DESIGN-CONSTRUCT SERVICES

Michael Baker International
Moretrench
Mueser Rutledge Consulting
Engineers

OBG

Parsons Brinckerhoff
Pro-ROV Services
QSP Packers, LLC
RST Instruments Ltd.
SAGE Engineers

Schnabel Engineering, Inc.

Stanley Consultants, Inc.

Stantec Consulting Services Inc.

T.Y. Lin International
Tectonic Engineering & Surveying
Consultants P.C.

TREVIICOS

Vertical Access LLC
Vista Data Vision
WatershedGeo

Worthington Products, Inc.

Nebraska

AECOM

Amec Foster Wheeler

Applied Weather Associates, LLC

ASI Constructors, Inc.

Aubian Engineering Inc.

Barnard Construction

Company, Inc.

Barr Engineering Co.

BDI

Canary Systems, Inc.

CARPI USA Inc

CDM Smith

Center Rock Inc.

COH Inc.

D'Appolonia

Dewberry

DOWL

Dyrhoff Inc.

DYWIDAG Systems International

(DSI)

Earth Reinforcement Testing, Inc.

(ERTesting)

Emagineered Solutions, Inc.

FENSTERMAKER

Flo-2D Software, Inc.

Fugro Consultants Inc.

Gannett Fleming

Hayward Baker Inc.

HDR

hydroGEOPHYSICS Inc.

Hydroplus, Inc.

International Erosion Control
Systems

Kleinfelder

Lemke Industrial Machine LLC

McMahon & Mann Consulting

Engineers, P.C.

Mead & Hunt, Inc.

Mecan-Hydro

Michael Baker International

Moretrench

Mueser Rutledge Consulting

Engineers

OBG

Parsons Brinckerhoff

Pro-ROV Services

HUTTON
CONSTRUCTION

"A single source construction service provider"

- Concrete & Masonry Repair, Rehabilitation & Coating
- Spillways, Weirs & Training Walls
- Pressure Grouting & Crack Repair
- Rip Rap & Gabions
- Earthwork & Grading
- New Construction & Rehabilitation
- Dams, Outlet Works & Process Facilities
- Aqueduct & Pipeline
- Mechanical System Installation & Repairs
- Construction Management

P.1.973.857.2501 | WWW.HUTTON1.COM | 41 VILLAGE PARK ROAD | CEDAR GROVE | NEW JERSEY 07009

ASDSO FOUNDERS CIRCLE SUSTAINING MEMBER

QSP Packers, LLC
RST Instruments Ltd.
SAGE Engineers
Schnabel Engineering, Inc.
Stanley Consultants, Inc.
Stantec Consulting Services Inc.
T.Y. Lin International
Tectonic Engineering & Surveying
Consultants P.C.
TREVIICOS
Vertical Access LLC
Vista Data Vision
WatershedGeo
Worthington Products, Inc.

Nevada

AECOM

Amec Foster Wheeler

Applied Weather Associates, LLC

ASI Constructors, Inc.

Aubian Engineering Inc.

Barnard Construction

Company, Inc.

Barr Engineering Co.

BDI

Canary Systems, Inc.

CARPI USA Inc

CDM Smith

Center Rock Inc.

COH Inc.

D'Appolonia

DOWL

Dyrhoff Inc.

DYWIDAG Systems International
(DSI)

Earth Reinforcement Testing, Inc.
(ERTesting)

Emagineered Solutions, Inc.

FENSTERMAKER

Flo-2D Software, Inc.

Fugro Consultants Inc.

Gannett Fleming

Hayward Baker Inc.

HDR

hydroGEOPHYSICS Inc.

Hydroplus, Inc.

International Erosion Control
Systems

Kleinfelder

Lemke Industrial Machine LLC
McMahon & Mann Consulting
Engineers, P.C.
Mead & Hunt, Inc.
Mecan-Hydro
Michael Baker International
Mueser Rutledge Consulting
Engineers

OBG

Parsons Brinckerhoff

Pro-ROV Services

QSP Packers, LLC

RST Instruments Ltd.

SAGE Engineers

Schnabel Engineering, Inc.

Stanley Consultants, Inc.

Stantec Consulting Services Inc.

T.Y. Lin International

Tectonic Engineering & Surveying
Consultants P.C.

TREVIICOS

Vertical Access LLC

Vista Data Vision

WatershedGeo

Worthington Products, Inc.

New Hampshire

AECOM

Amec Foster Wheeler

Applied Weather Associates, LLC

ASI Constructors, Inc.

Aubian Engineering Inc.

Barnard Construction

Company, Inc.

Barr Engineering Co.

BDI

Brayman Construction

Canary Systems, Inc.

CARPI USA Inc

CDM Smith

Center Rock Inc.

COH Inc.

D'Appolonia

Dyrhoff Inc.

DYWIDAG Systems International
(DSI)

Earth Reinforcement Testing, Inc.
(ERTesting)

Emagineered Solutions, Inc.

FENSTERMAKER

Flo-2D Software, Inc.

Fugro Consultants Inc.

Fuss & O'Neill, Inc.

Gannett Fleming

Gomez and Sullivan Engineers, DPC

Hayward Baker Inc.

HDR

hydroGEOPHYSICS Inc.

Hydroplus, Inc.

International Erosion Control
Systems

Kleinfelder

Lemke Industrial Machine LLC

McMahon & Mann Consulting
Engineers, P.C.

Mead & Hunt, Inc.

Mecan-Hydro

Michael Baker International

Moretrench

Mueser Rutledge Consulting
Engineers

OBG

Parsons Brinckerhoff

Pro-ROV Services

QSP Packers, LLC

RST Instruments Ltd.

SAGE Engineers

Schnabel Engineering, Inc.

Stanley Consultants, Inc.

Stantec Consulting Services Inc.

T.Y. Lin International

Tectonic Engineering & Surveying
Consultants P.C.

TREVIICOS

Vertical Access LLC

Vista Data Vision

WatershedGeo

Worthington Products, Inc.

New Jersey

AECOM

Amec Foster Wheeler

Applied Weather Associates, LLC

ASI Constructors, Inc.

Aubian Engineering Inc.

Barnard Construction

Company, Inc.

Barr Engineering Co.

BDI
 Brayman Construction
 Canary Systems, Inc.
CARPI USA Inc
CDM Smith
 Center Rock Inc.
 Civil Dynamics
 COH Inc.
 D'Appolonia
 Dewberry
 Dyrhoff Inc.
 DYWIDAG Systems International
 (DSI)
 Earth Reinforcement Testing, Inc.
 (ERTesting)
 Emagineered Solutions, Inc.
 FENSTERMAKER
 Flo-2D Software, Inc.
 Fugro Consultants Inc.
 Gomez and Sullivan Engineers, DPC
Gannett Fleming
Hayward Baker Inc.
HDR
 Hutton Construction
 hydroGEOPHYSICS Inc.

Hydroplus, Inc.
 International Erosion Control
 Systems
Kleinfelder
 Lemke Industrial Machine LLC
 McCormick Taylor
 McMahon & Mann Consulting
 Engineers, P.C.
 Mead & Hunt, Inc.
 Mecan-Hydro
 Michael Baker International
 Moretrench
 Mueser Rutledge Consulting
 Engineers
OBG
 Parsons Brinckerhoff
 Princeton Hydro
 Pro-ROV Services
 QSP Packers, LLC
 RST Instruments Ltd.
 SAGE Engineers
Schnabel Engineering, Inc.
 Stanley Consultants, Inc.
Stantec Consulting Services Inc.
 T.Y. Lin International

Tectonic Engineering & Surveying
 Consultants P.C.
TREVIICOS
 Vertical Access LLC
 Vista Data Vision
 WatershedGeo
Worthington Products, Inc.
 WSP

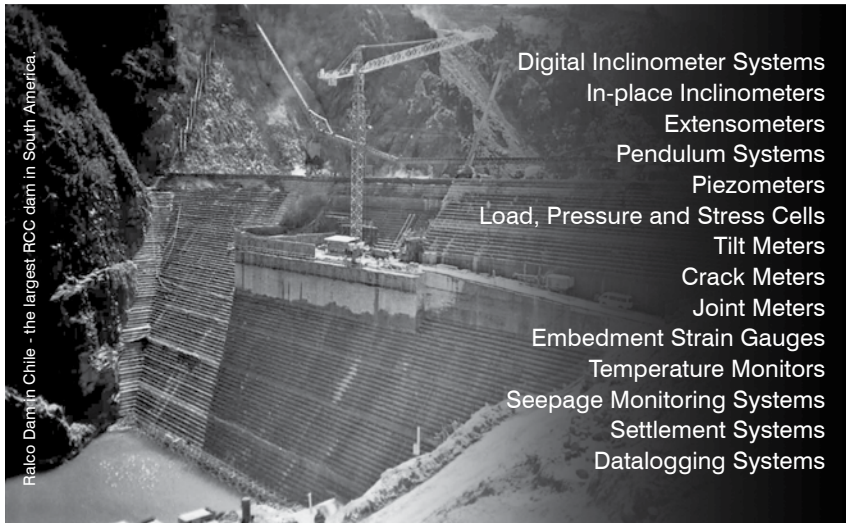
New Mexico

AECOM
Amec Foster Wheeler
 Applied Weather Associates, LLC
ASI Constructors, Inc.
 Aubian Engineering Inc.
**Barnard Construction
 Company, Inc.**
 Barr Engineering Co.
 BDI
 Canary Systems, Inc.
CARPI USA Inc
CDM Smith
 Center Rock Inc.
 COH Inc.

innovation

in dam monitoring & safety instrumentation

❖ Technical assistance ❖ Custom development ❖ Installation & inspection ❖ Training & supervision



Ralco Dam in Chile - the largest RCC dam in South America.

Digital Inclinometer Systems
 In-place Inclinometers
 Extensometers
 Pendulum Systems
 Piezometers
 Load, Pressure and Stress Cells
 Tilt Meters
 Crack Meters
 Joint Meters
 Embedment Strain Gauges
 Temperature Monitors
 Seepage Monitoring Systems
 Settlement Systems
 Datalogging Systems



innovation in
 geotechnical
 instrumentation

RST Instruments Ltd.
 11545 Kingston St.,
 Maple Ridge, BC
 Canada V2X 0Z5
Tel: 604-540-1100
Toll Free: 1-800-665-5599
info@rstinstruments.com



rstinstruments.com

CONNECT WITH RST!



LinkedIn

<http://www.linkedin.com/company/rst-instruments-ltd->



<http://goo.gl/5JDiaz>

MG0135C

D'Appolonia
DOWL
Dyrhoff Inc.
DYWIDAG Systems International
(DSI)
Earth Reinforcement Testing, Inc.
(ERTesting)
Emagineered Solutions, Inc.
FENSTERMAKER
Flo-2D Software, Inc.
Fugro Consultants Inc.

Gannett Fleming
Hayward Baker Inc.

HDR
hydroGEOPHYSICS Inc.
Hydroplus, Inc.
International Erosion Control
Systems

Kleinfelder
Lemke Industrial Machine LLC
McMahon & Mann Consulting
Engineers, P.C.

Mead & Hunt, Inc.
Mecan-Hydro
Michael Baker International
Mueser Rutledge Consulting
Engineers

OBG
Parsons Brinckerhoff
Pro-ROV Services
QSP Packers, LLC
RST Instruments Ltd.
SAGE Engineers

Schnabel Engineering, Inc.
Stanley Consultants, Inc.
Stantec Consulting Services Inc.
T.Y. Lin International
Tectonic Engineering & Surveying
Consultants P.C.

TREVIICOS
Vertical Access LLC
Vista Data Vision
WatershedGeo
Worthington Products, Inc.

New York

AECOM
Amec Foster Wheeler
Applied Weather Associates, LLC

ASI Constructors, Inc.
Aubian Engineering Inc.
**Barnard Construction
Company, Inc.**
Barr Engineering Co.
BDI
Brayman Construction
Canary Systems, Inc.
CARPI USA Inc
CDM Smith
Center Rock Inc.
Civil Dynamics
COH Inc.
D'Appolonia
Dewberry
Dyrhoff Inc.
DYWIDAG Systems International
(DSI)
Earth Reinforcement Testing, Inc.
(ERTesting)
Emagineered Solutions, Inc.
FENSTERMAKER
Flo-2D Software, Inc.
Fugro Consultants Inc.
Fuss & O'Neill, Inc.

Gannett Fleming
Gomez and Sullivan Engineers, DPC
Hayward Baker Inc.
HDR
Hutton Construction
hydroGEOPHYSICS Inc.
Hydroplus, Inc.
International Erosion Control
Systems

Kleinfelder
Lemke Industrial Machine LLC
McMahon & Mann Consulting
Engineers, P.C.
Mead & Hunt, Inc.

Mecan-Hydro
Michael Baker International
Moretrench
Mueser Rutledge Consulting
Engineers

OBG
Parsons Brinckerhoff
Pro-ROV Services
QSP Packers, LLC
RST Instruments Ltd.
SAGE Engineers

Schnabel Engineering, Inc.
Stanley Consultants, Inc.
Stantec Consulting Services Inc.
T.Y. Lin International
Tectonic Engineering & Surveying
Consultants P.C.
TREVIICOS
Vertical Access LLC
Vista Data Vision
WatershedGeo
Worthington Products, Inc.
WSP

North Carolina

AECOM
Amec Foster Wheeler
Applied Weather Associates, LLC
ASI Constructors, Inc.
Aubian Engineering Inc.
**Barnard Construction
Company, Inc.**
Barr Engineering Co.
BDI
Brayman Construction
Canary Systems, Inc.
CARPI USA Inc
CDM Smith
Center Rock Inc.
COH Inc.
D'Appolonia
Dewberry
Dyrhoff Inc.
DYWIDAG Systems International
(DSI)
Earth Reinforcement Testing, Inc.
(ERTesting)
Emagineered Solutions, Inc.
Engineered Restorations, Inc.
FENSTERMAKER
Flo-2D Software, Inc.
Fugro Consultants Inc.
Gomez and Sullivan Engineers, DPC
Gannett Fleming
Hayward Baker Inc.
HDR
hydroGEOPHYSICS Inc.
Hydroplus, Inc.
International Erosion Control
Systems

Kleinfelder

Lemke Industrial Machine LLC
McCormick Taylor
McMahon & Mann Consulting Engineers, P.C.
Mead & Hunt, Inc.
Mecan-Hydro
Michael Baker International
Moretrench
Mueser Rutledge Consulting Engineers

OBG

Parsons Brinckerhoff
Pro-ROV Services
QSP Packers, LLC
RST Instruments Ltd.
S&ME, Inc.
SAGE Engineers

Schnabel Engineering, Inc.

Stanley Consultants, Inc.
Stantec Consulting Services Inc.
T.Y. Lin International
Tectonic Engineering & Surveying Consultants P.C.

TREVIICOS

Vertical Access LLC
Vista Data Vision
WatershedGeo

Worthington Products, Inc.

WSP

North Dakota

AECOM

Amec Foster Wheeler

Applied Weather Associates, LLC

ASI Constructors, Inc.

Aubian Engineering Inc.

Barnard Construction Company, Inc.

Barr Engineering Co.

BDI

Canary Systems, Inc.

CARPI USA Inc

CDM Smith

Center Rock Inc.

COH Inc.

D'Appolonia

Dewberry

DOWL

Dyrhoff Inc.

DYWIDAG Systems International (DSI)

Earth Reinforcement Testing, Inc. (ERTesting)

Emagineered Solutions, Inc.

FENSTERMAKER

Flo-2D Software, Inc.

Fugro Consultants Inc.

Gannett Fleming

Hayward Baker Inc.

HDR

hydroGEOPHYSICS Inc.

Hydroplus, Inc.

International Erosion Control Systems

Kleinfelder

Lemke Industrial Machine LLC
McMahon & Mann Consulting Engineers, P.C.

Mead & Hunt, Inc.

Mecan-Hydro

Michael Baker International

Moretrench

Mueser Rutledge Consulting Engineers



BETTER RISK MANAGEMENT FOR RADIAL GATES

*Trunnion friction measurements can help
prioritize your maintenance program.*

Let the testing experts at BDI reduce your stress.

BDI

BRIDGETEST.COM
CALL US TODAY!
(303) 494-3230

OBG

Parsons Brinckerhoff
 Pro-ROV Services
 QSP Packers, LLC
 RST Instruments Ltd.
 SAGE Engineers

Schnabel Engineering, Inc.

Stanley Consultants, Inc.

Stantec Consulting Services Inc.

T.Y. Lin International
 Tectonic Engineering & Surveying
 Consultants P.C.

TREVIICOS

Vertical Access LLC
 Vista Data Vision
 WatershedGeo

Worthington Products, Inc.**Ohio**

AECOM**Amec Foster Wheeler**

Applied Weather Associates, LLC

ASI Constructors, Inc.

Aubian Engineering Inc.

Barnard Construction Company, Inc.

Barr Engineering Co.
 BDI

Brayman Construction

Canary Systems, Inc.

CARPI USA Inc**CDM Smith**

Center Rock Inc.
 CME Engineering
 COH Inc.

D'Appolonia

Dewberry

Dyrhoff Inc.

DYWIDAG Systems International
 (DSI)

Earth Reinforcement Testing, Inc.
 (ERTesting)

Emagineered Solutions, Inc.

FENSTERMAKER

Flo-2D Software, Inc.

Fugro Consultants Inc.

Gannett Fleming

Gomez and Sullivan Engineers, DPC

Hayward Baker Inc.**HDR**

hydroGEOPHYSICS Inc.
 Hydroplus, Inc.
 International Erosion Control
 Systems

Kleinfelder

Lemke Industrial Machine LLC

McCormick Taylor

McMahon & Mann Consulting
 Engineers, P.C.

Mead & Hunt, Inc.

Mecan-Hydro

Michael Baker International

Moretrench

Mueser Rutledge Consulting
 Engineers

OBG

Parsons Brinckerhoff
 Pro-ROV Services
 QSP Packers, LLC
 RST Instruments Ltd.

S&ME, Inc.

SAGE Engineers

Schnabel Engineering, Inc.

Stanley Consultants, Inc.

Stantec Consulting Services Inc.

T.Y. Lin International
 Tectonic Engineering & Surveying
 Consultants P.C.

TREVIICOS

Vertical Access LLC
 Vista Data Vision
 WatershedGeo

Worthington Products, Inc.**Oklahoma**

AECOM**Amec Foster Wheeler**

Applied Weather Associates, LLC

ASI Constructors, Inc.

Aubian Engineering Inc.

Barnard Construction Company, Inc.

Barr Engineering Co.
 BDI

Canary Systems, Inc.

CARPI USA Inc**CDM Smith**

Center Rock Inc.

COH Inc.

D'Appolonia

Dewberry

Dyrhoff Inc.

DYWIDAG Systems International
 (DSI)

Earth Reinforcement Testing, Inc.
 (ERTesting)

Emagineered Solutions, Inc.

FENSTERMAKER

Flo-2D Software, Inc.

Fugro Consultants Inc.

Gannett Fleming**Hayward Baker Inc.****HDR**

Henley-Johnston & Associates, Inc.
 hydroGEOPHYSICS Inc.

Hydroplus, Inc.

International Erosion Control
 Systems

Kleinfelder

Lemke Industrial Machine LLC

McMahon & Mann Consulting
 Engineers, P.C.

Mead & Hunt, Inc.

Mecan-Hydro

Michael Baker International

Moretrench

Mueser Rutledge Consulting
 Engineers

OBG

Parsons Brinckerhoff
 Pro-ROV Services
 QSP Packers, LLC
 RST Instruments Ltd.

SAGE Engineers

Schnabel Engineering, Inc.

Stanley Consultants, Inc.

Stantec Consulting Services Inc.

T.Y. Lin International
 Tectonic Engineering & Surveying
 Consultants P.C.

TREVIICOS

Vertical Access LLC
 Vista Data Vision
 WatershedGeo

Worthington Products, Inc.

Oregon

AECOM

Amec Foster Wheeler

Applied Weather Associates, LLC

ASI Constructors, Inc.

Aubian Engineering Inc.

Barnard Construction Company, Inc.

Barr Engineering Co.

BDI

Canary Systems, Inc.

CARPI USA Inc

CDM Smith

Center Rock Inc.

COH Inc.

D'Appolonia

DOWL

Dyrhoff Inc.

DYWIDAG Systems International (DSI)

Earth Reinforcement Testing, Inc. (ERTesting)

Emagineered Solutions, Inc.

FENSTERMAKER

Flo-2D Software, Inc.

Fugro Consultants Inc.

Gannett Fleming

Hayward Baker Inc.

HDR

hydroGEOPHYSICS Inc.

Hydroplus, Inc.

International Erosion Control Systems

Kleinfelder

Lemke Industrial Machine LLC

McMahon & Mann Consulting Engineers, P.C.

Mead & Hunt, Inc.

Mecan-Hydro

Michael Baker International

Mueser Rutledge Consulting Engineers

OBG

Parsons Brinckerhoff

Pro-ROV Services

QSP Packers, LLC

RST Instruments Ltd.

SAGE Engineers

Schnabel Engineering, Inc.

Stanley Consultants, Inc.

Stantec Consulting Services Inc.

T.Y. Lin International

Tectonic Engineering & Surveying Consultants P.C.

TREVIICOS

Vertical Access LLC

Vista Data Vision

WatershedGeo

Worthington Products, Inc.

Pennsylvania

AECOM

Amec Foster Wheeler

Applied Weather Associates, LLC

ASI Constructors, Inc.

Aubian Engineering Inc.

Barnard Construction Company, Inc.

Barr Engineering Co.

BDI

Brayman Construction

Canary Systems, Inc.



LD
LEAK DETECTION
A *hydro* GEOPHYSICS SERVICE

IS YOUR DAM LEAKING?

Proven Technology Used For EPA, DOE & State Regulatory Agencies

Real-Time Leak Monitoring
Seepage Mapping
Preferential Flow Mapping
Leak Detection & Location
Contaminant Infiltration Mapping

Leak Location & Monitoring

hgiLeakDetection.com | 866-647-3315

HGI is a full service geophysical consulting company

CARPI USA Inc**CDM Smith**

Center Rock Inc.
 Civil Dynamics
 CME Engineering
 COH Inc.
 D'Appolonia
 Dewberry
 Dyrhoff Inc.
 DYWIDAG Systems International
 (DSI)

Earth Reinforcement Testing, Inc.
 (ERTesting)

Emagineered Solutions, Inc.
 FENSTERMAKER

Flo-2D Software, Inc.
 Fugro Consultants Inc.
 Fuss & O'Neill, Inc.

Gannett Fleming

Gomez and Sullivan Engineers, DPC

Hayward Baker Inc.**HDR**

Hutton Construction
 hydroGEOPHYSICS Inc.
 Hydroplus, Inc.

International Erosion Control
 Systems

Kleinfelder

Lemke Industrial Machine LLC
 McCormick Taylor
 McMahan & Mann Consulting
 Engineers, P.C.

Mead & Hunt, Inc.

Mecan-Hydro

Michael Baker International
 Moretrench

Mueser Rutledge Consulting
 Engineers

OBG

Parsons Brinckerhoff
 Princeton Hydro
 Pro-ROV Services
 QSP Packers, LLC
 RST Instruments Ltd.
 S&ME, Inc.

SAGE Engineers

Schnabel Engineering, Inc.

Stanley Consultants, Inc.

Stantec Consulting Services Inc.

T.Y. Lin International
 Tectonic Engineering & Surveying
 Consultants P.C.

TREVIICOS

Vertical Access LLC

Vista Data Vision

WatershedGeo

Worthington Products, Inc.

WSP

Rhode Island**AECOM****Amec Foster Wheeler**

Applied Weather Associates, LLC

ASI Constructors, Inc.

Aubian Engineering Inc.

Barnard Construction**Company, Inc.**

Barr Engineering Co.

BDI

Canary Systems, Inc.

CARPI USA Inc**CDM Smith**

Center Rock Inc.

COH Inc.

D'Appolonia

Dyrhoff Inc.

DYWIDAG Systems International
 (DSI)

Earth Reinforcement Testing, Inc.
 (ERTesting)

Emagineered Solutions, Inc.

FENSTERMAKER

Flo-2D Software, Inc.

Fugro Consultants Inc.

Fuss & O'Neill, Inc.

Gannett Fleming

Gomez and Sullivan Engineers, DPC

Hayward Baker Inc.**HDR**

hydroGEOPHYSICS Inc.

Hydroplus, Inc.

International Erosion Control
 Systems

Kleinfelder

Lemke Industrial Machine LLC

McMahan & Mann Consulting
 Engineers, P.C.

Mead & Hunt, Inc.

Mecan-Hydro

Michael Baker International

Moretrench

Mueser Rutledge Consulting
 Engineers

OBG

Parsons Brinckerhoff

Pro-ROV Services

QSP Packers, LLC

RST Instruments Ltd.

SAGE Engineers

Schnabel Engineering, Inc.

Stanley Consultants, Inc.

Stantec Consulting Services Inc.

T.Y. Lin International

Tectonic Engineering & Surveying
 Consultants P.C.

TREVIICOS

Vertical Access LLC

Vista Data Vision

WatershedGeo

Worthington Products, Inc.

WSP

South Carolina**AECOM****Amec Foster Wheeler**

Applied Weather Associates, LLC

ASI Constructors, Inc.

Aubian Engineering Inc.

Barnard Construction**Company, Inc.**

Barr Engineering Co.

BDI

Brayman Construction

Canary Systems, Inc.

CARPI USA Inc**CDM Smith**

Center Rock Inc.

COH Inc.

D'Appolonia

Dewberry

Dyrhoff Inc.

DYWIDAG Systems International
 (DSI)

Earth Reinforcement Testing, Inc.
 (ERTesting)

Emagineered Solutions, Inc.

Engineered Restorations, Inc.

FENSTERMAKER
 Flo-2D Software, Inc.
 Fugro Consultants Inc.
 Fuss & O'Neill, Inc.
Gannett Fleming
 Gomez and Sullivan Engineers, DPC
Hayward Baker Inc.
HDR
 hydroGEOPHYSICS Inc.
 Hydroplus, Inc.
 International Erosion Control
 Systems
Kleinfelder
 Lemke Industrial Machine LLC
 McCormick Taylor
 McMahon & Mann Consulting
 Engineers, P.C.
 Mead & Hunt, Inc.
 Mecan-Hydro
 Michael Baker International
 Moretrench
 Mueser Rutledge Consulting
 Engineers
OBG
 Parsons Brinckerhoff
 Pro-ROV Services
 QSP Packers, LLC
 RST Instruments Ltd.

S&ME, Inc.
 SAGE Engineers
Schnabel Engineering, Inc.
 Stanley Consultants, Inc.
Stantec Consulting Services Inc.
 T.Y. Lin International
 Tectonic Engineering & Surveying
 Consultants P.C.
TREVIICOS
 Vertical Access LLC
 Vista Data Vision
 WatershedGeo
Worthington Products, Inc.

South Dakota

AECOM
Amec Foster Wheeler
 Applied Weather Associates, LLC
ASI Constructors, Inc.
 Aubian Engineering Inc.
**Barnard Construction
 Company, Inc.**
 Barr Engineering Co.
 BDI
 Canary Systems, Inc.
CARPI USA Inc
CDM Smith

Center Rock Inc.
 COH Inc.
 D'Appolonia
 DOWL
 Dewberry
 Dyrhoff Inc.
 DYWIDAG Systems International
 (DSI)
 Earth Reinforcement Testing, Inc.
 (ERTesting)
 Emagineered Solutions, Inc.
 FENSTERMAKER
 Flo-2D Software, Inc.
 Fugro Consultants Inc.
Gannett Fleming
Hayward Baker Inc.
HDR
 hydroGEOPHYSICS Inc.
 Hydroplus, Inc.
 International Erosion Control
 Systems
Kleinfelder
 Lemke Industrial Machine LLC
 McMahon & Mann Consulting
 Engineers, P.C.
 Mead & Hunt, Inc.
 Mecan-Hydro
 Michael Baker International

MMCE engineers are experienced in all aspects of embankment and dam engineering including:

- Dam Safety Inspections,
- Subsurface explorations, geologic evaluations and instrumentation,
- Seepage and stability analyses,
- Remedial recommendations for slope stabilization and seepage control,
- Stream Restoration,
- Non – destructive testing of dam anchors,
- Engineering Assessment Reports – geotechnical aspects, and,
- Design and construction documents for remedial work.



For more information, please contact: Donald R. McMahon, P.E. or Michael J. Mann, P.E. 716.834.8392 www.mmce.net



Moretrench
Mueser Rutledge Consulting
Engineers
OBG
Parsons Brinckerhoff
Pro-ROV Services
QSP Packers, LLC
RST Instruments Ltd.
SAGE Engineers
Schnabel Engineering, Inc.
Stanley Consultants, Inc.
Stantec Consulting Services Inc.
T.Y. Lin International
Tectonic Engineering & Surveying
Consultants P.C.
TREVIICOS
Vertical Access LLC
Vista Data Vision
WatershedGeo
Worthington Products, Inc.

Tennessee

AECOM
Amec Foster Wheeler
Applied Weather Associates, LLC
ASI Constructors, Inc.
Aubian Engineering Inc.
**Barnard Construction
Company, Inc.**
Barr Engineering Co.
BDI
Brayman Construction
Canary Systems, Inc.
CARPI USA Inc
CDM Smith
Center Rock Inc.
COH Inc.
D'Appolonia
Dewberry
Dyrhoff Inc.
DYWIDAG Systems International
(DSI)
Earth Reinforcement Testing, Inc.
(ERTesting)
Emagineered Solutions, Inc.
Engineered Restorations, Inc.
FENSTERMAKER
Flo-2D Software, Inc.
Fugro Consultants Inc.

Gannett Fleming
Hayward Baker Inc.
HDR
hydroGEOPHYSICS Inc.
Hydroplus, Inc.
International Erosion Control
Systems
Kleinfelder
Lemke Industrial Machine LLC
McMahon & Mann Consulting
Engineers, P.C.
Mead & Hunt, Inc.
Mecan-Hydro
Michael Baker International
Moretrench
Mueser Rutledge Consulting
Engineers

OBG
Parsons Brinckerhoff
Pro-ROV Services
QSP Packers, LLC
RST Instruments Ltd.
S&ME, Inc.
SAGE Engineers
Schnabel Engineering, Inc.
Stanley Consultants, Inc.
Stantec Consulting Services Inc.
T.Y. Lin International
Tectonic Engineering & Surveying
Consultants P.C.
TREVIICOS
Vertical Access LLC
Vista Data Vision
WatershedGeo
Worthington Products, Inc.

Texas

AECOM
Amec Foster Wheeler
Applied Weather Associates, LLC
ASI Constructors, Inc.
Aubian Engineering Inc.
Avanti International
**Barnard Construction
Company, Inc.**
Barr Engineering Co.
BDI
Canary Systems, Inc.
CARPI USA Inc

CDM Smith
Center Rock Inc.
COH Inc.
D'Appolonia
Dewberry
Dyrhoff Inc.
DYWIDAG Systems International
(DSI)
Earth Reinforcement Testing, Inc.
(ERTesting)
Emagineered Solutions, Inc.
FENSTERMAKER
Flo-2D Software, Inc.
Fugro Consultants Inc.
Gannett Fleming
Hayward Baker Inc.
HDR
Henley-Johnston & Associates, Inc.
hydroGEOPHYSICS Inc.
Hydroplus, Inc.
International Erosion Control
Systems
Kleinfelder
Lemke Industrial Machine LLC
McMahon & Mann Consulting
Engineers, P.C.
Mead & Hunt, Inc.
Mecan-Hydro
Michael Baker International
Moretrench
Mueser Rutledge Consulting
Engineers
OBG
Parsons Brinckerhoff
Pro-ROV Services
QSP Packers, LLC
RST Instruments Ltd.
SAGE Engineers
Schnabel Engineering, Inc.
Stanley Consultants, Inc.
Stantec Consulting Services Inc.
T.Y. Lin International
Tectonic Engineering & Surveying
Consultants P.C.
TREVIICOS
Vertical Access LLC
Vista Data Vision
WatershedGeo
Worthington Products, Inc.

Utah

AECOM

Amec Foster Wheeler

Applied Weather Associates, LLC

ASI Constructors, Inc.

Aubian Engineering Inc.

Barnard Construction

Company, Inc.

Barr Engineering Co.

BDI

Canary Systems, Inc.

CARPI USA Inc

CDM Smith

Center Rock Inc.

COH Inc.

D'Appolonia

DOWL

Dyrhoff Inc.

DYWIDAG Systems International

(DSI)

Earth Reinforcement Testing, Inc.

(ERTesting)

Emagineered Solutions, Inc.

FENSTERMAKER

Flo-2D Software, Inc.

Fugro Consultants Inc.

Gannett Fleming

Hayward Baker Inc.

HDR

hydroGEOPHYSICS Inc.

Hydroplus, Inc.

International Erosion Control

Systems

Kleinfelder

Lemke Industrial Machine LLC

McMahon & Mann Consulting

Engineers, P.C.

Mead & Hunt, Inc.

Mecan-Hydro

Michael Baker International

Mueser Rutledge Consulting

Engineers

OBG

Parsons Brinckerhoff

Pro-ROV Services

QSP Packers, LLC

RST Instruments Ltd.

SAGE Engineers

Schnabel Engineering, Inc.

Stanley Consultants, Inc.

Stantec Consulting Services Inc.

T.Y. Lin International

Tectonic Engineering & Surveying

Consultants P.C.

TREVIICOS

Vertical Access LLC

Vista Data Vision

WatershedGeo

Worthington Products, Inc.

Vermont

AECOM

Amec Foster Wheeler

Andrzejewski Engineering

Applied Weather Associates, LLC

ASI Constructors, Inc.

Aubian Engineering Inc.

Barnard Construction

Company, Inc.

Barr Engineering Co.

Design of Concrete
Repair & Rehabilitation



Innovative and
Cost-Effective
Spillway Designs



Experienced in
Addressing
Historic
Preservation
Concerns



Multiple Award-Winning
Dam Construction Projects



CIVIL @ DYNAMICS

Providing a full range of dam engineering services for over 25 years

Dam Safety Inspections
Dam Safety Assessments
FERC Part 12D Inspections
Hydrologic and Hydraulic Studies
Dam Breach Modeling
Inundation Mapping
Emergency Action Plans
Stability Analysis
Rehabilitation Designs
Permitting
Construction Services
Operation and Maintenance Plans
Dam Safety Training
Lake Dredging
Dam Removal Design

109A Route 515, P.O. Box 760
Stockholm, N.J. 07460-0760
Phone (973) 697-3496 Fax (973) 697-1678

Christopher S. Adams, P.E., President
cadams@civildynamics.com

BDI
Brayman Construction
Canary Systems, Inc.
CARPI USA Inc
CDM Smith
Center Rock Inc.
COH Inc.
D'Appolonia
Dyrhoff Inc.
DYWIDAG Systems International
(DSI)
Earth Reinforcement Testing, Inc.
(ERTesting)
Emagineered Solutions, Inc.
FENSTERMAKER
Flo-2D Software, Inc.
Fugro Consultants Inc.
Fuss & O'Neill, Inc.
Gomez and Sullivan Engineers, DPC
Gannett Fleming
Hayward Baker Inc.
HDR
hydroGEOPHYSICS Inc.
Hydroplus, Inc.
International Erosion Control
Systems
Kleinfelder
Lemke Industrial Machine LLC
McMahon & Mann Consulting
Engineers, P.C.
Mead & Hunt, Inc.
Mecan-Hydro
Michael Baker International
Moretrench
Mueser Rutledge Consulting
Engineers
OBG
Parsons Brinckerhoff
Pro-ROV Services
QSP Packers, LLC
RST Instruments Ltd.
SAGE Engineers
Schnabel Engineering, Inc.
Stanley Consultants, Inc.
Stantec Consulting Services Inc.
T.Y. Lin International
Tectonic Engineering & Surveying
Consultants P.C.
TREVIICOS

Vertical Access LLC
Vista Data Vision
WatershedGeo
Worthington Products, Inc.
WSP

Virginia

AECOM
Amec Foster Wheeler
Applied Weather Associates, LLC
ASI Constructors, Inc.
Aubian Engineering Inc.
**Barnard Construction
Company, Inc.**
Barr Engineering Co.
BDI
Brayman Construction
Canary Systems, Inc.
CARPI USA Inc
CDM Smith
Center Rock Inc.
COH Inc.
D'Appolonia
Dewberry
Dyrhoff Inc.
DYWIDAG Systems International
(DSI)
Earth Reinforcement Testing, Inc.
(ERTesting)
Emagineered Solutions, Inc.
FENSTERMAKER
Flo-2D Software, Inc.
Fugro Consultants Inc.
Fuss & O'Neill, Inc.
Gannett Fleming
Gomez and Sullivan Engineers, DPC
Hayward Baker Inc.
HDR
hydroGEOPHYSICS Inc.
Hydroplus, Inc.
International Erosion Control
Systems
Kleinfelder
Lemke Industrial Machine LLC
McCormick Taylor
McMahon & Mann Consulting
Engineers, P.C.
Mead & Hunt, Inc.
Mecan-Hydro

Michael Baker International
Moretrench
Mueser Rutledge Consulting
Engineers
OBG
Parsons Brinckerhoff
Pro-ROV Services
QSP Packers, LLC
RST Instruments Ltd.
S&ME, Inc.
SAGE Engineers
Schnabel Engineering, Inc.
Stanley Consultants, Inc.
Stantec Consulting Services Inc.
T.Y. Lin International
Tectonic Engineering & Surveying
Consultants P.C.
TREVIICOS
Vertical Access LLC
Vista Data Vision
WatershedGeo
Worthington Products, Inc.

Washington

AECOM
Amec Foster Wheeler
Applied Weather Associates, LLC
ASI Constructors, Inc.
Aubian Engineering Inc.
**Barnard Construction
Company, Inc.**
Barr Engineering Co.
BDI
Canary Systems, Inc.
CARPI USA Inc
CDM Smith
Center Rock Inc.
COH Inc.
D'Appolonia
Dewberry
DOWL
Dyrhoff Inc.
DYWIDAG Systems International
(DSI)
Earth Reinforcement Testing, Inc.
(ERTesting)
Emagineered Solutions, Inc.
FENSTERMAKER
Flo-2D Software, Inc.

Fugro Consultants Inc.
Gannett Fleming
Hayward Baker Inc.
HDR
hydroGEOPHYSICS Inc.
Hydroplus, Inc.
International Erosion Control
Systems
Kleinfelder
Lemke Industrial Machine LLC
McMahon & Mann Consulting
Engineers, P.C.
Mead & Hunt, Inc.
Mecan-Hydro
Michael Baker International
Mueser Rutledge Consulting
Engineers
OBG
Parsons Brinckerhoff
Pro-ROV Services
QSP Packers, LLC
RST Instruments Ltd.
SAGE Engineers
Schnabel Engineering, Inc.
Stanley Consultants, Inc.
Stantec Consulting Services Inc.
T.Y. Lin International
Tectonic Engineering & Surveying
Consultants P.C.
TREVIICOS
Vertical Access LLC
Vista Data Vision
WatershedGeo
Worthington Products, Inc.

West Virginia

AECOM
Amec Foster Wheeler
Applied Weather Associates, LLC
ASI Constructors, Inc.
Aubian Engineering Inc.
**Barnard Construction
Company, Inc.**
Barr Engineering Co.
BDI
Brayman Construction
Canary Systems, Inc.
CARPI USA Inc
CDM Smith

Center Rock Inc.
CME Engineering
COH Inc.
D'Appolonia
Dewberry
Dyrhoff Inc.
DYWIDAG Systems International
(DSI)
Earth Reinforcement Testing, Inc.
(ERTesting)
Emagineered Solutions, Inc.
FENSTERMAKER
Flo-2D Software, Inc.

Fugro Consultants Inc.
Gomez and Sullivan Engineers, DPC
Gannett Fleming
Hayward Baker Inc.
HDR
hydroGEOPHYSICS Inc.
Hydroplus, Inc.
International Erosion Control
Systems
Kleinfelder
Lemke Industrial Machine LLC
McMahon & Mann Consulting
Engineers, P.C.

DOWL www.dowl.com

WE ARE YOUR SOURCE FOR
**DAM SAFETY INVESTIGATIONS, DESIGN,
AND CONSTRUCTION ADMINISTRATION**

CONTACT:
JASON THOM, PE
406.656.6399
JTHOM@DOWL.COM

Alaska	Arizona	Colorado	Montana
North Dakota	Oregon	Washington	Wyoming



Dam Removal

Rehabilitation Design

Levee Certification

Levee Inspection/Monitoring

Levee Repair/Remediation

Dam Break & Incremental Inundation Analysis

Subsurface Investigations

Seepage & Stability Analysis

Hydrology & Hydraulic Analysis

Emergency Action Plans and O & M Manuals

Permitting/Regulatory Support Services

Wetland Delineation & Mitigation

Stream Restoration & Design

Construction Inspection/Contract Administration

We're hiring! Visit us at: www.mccormicktaylor.com

Mead & Hunt, Inc.
Mecan-Hydro
Michael Baker International
Moretrench
Mueser Rutledge Consulting
Engineers

OBG

Parsons Brinckerhoff
Pro-ROV Services
QSP Packers, LLC
RST Instruments Ltd.
S&ME, Inc.
SAGE Engineers

Schnabel Engineering, Inc.

Stanley Consultants, Inc.
Stantec Consulting Services Inc.
T.Y. Lin International
Tectonic Engineering & Surveying
Consultants P.C.

TREVIICOS

Vertical Access LLC
Vista Data Vision
WatershedGeo

Worthington Products, Inc.

Wisconsin

AECOM

Amec Foster Wheeler

Applied Weather Associates, LLC

ASI Constructors, Inc.

Aubian Engineering Inc.

**Barnard Construction
Company, Inc.**

Barr Engineering Co.

BDI

Canary Systems, Inc.

CARPI USA Inc

CDM Smith

Center Rock Inc.

COH Inc.

D'Appolonia

Dewberry

Dyrhoff Inc.

DYWIDAG Systems International
(DSI)

Earth Reinforcement Testing, Inc.
(ERTesting)

Emagineered Solutions, Inc.

FENSTERMAKER

Flo-2D Software, Inc.

Fugro Consultants Inc.
Gomez and Sullivan Engineers, DPC

**Gannett Fleming
Hayward Baker Inc.**

HDR

hydroGEOPHYSICS Inc.
Hydroplus, Inc.

International Erosion Control
Systems

Kleinfelder


Lemke Industrial Machine LLC
McMahon & Mann Consulting
Engineers, P.C.

Mead & Hunt, Inc.
Mecan-Hydro
Michael Baker International
Moretrench
Mueser Rutledge Consulting
Engineers

OBG

Parsons Brinckerhoff
Pro-ROV Services
QSP Packers, LLC
RST Instruments Ltd.
SAGE Engineers
Schnabel Engineering, Inc.

BUILT ON SOLID FOUNDATIONS



Heavy Civil and Geotechnical Contractors

Micropiles • Caissons • Sheet Piling • Anchors/Tiebacks • Bridges & Complex Structures • Demolition

Safety is our attitude for life

BRAYMAN construction corporation
Innovative Solutions Since 1947
724.443.1533 | www.brayman.com



BARNARD

People building for People.

dams & reservoirs | hydropower | power transmission | oil & gas pipelines | environmental



FUSEGATE® AUTOMATIC SPILLWAY CONTROL SYSTEM

Design · Supply · Installation · Turnkey

Canton Dam, Oklahoma, USA



More Water - More Power

- › Increase water storage
- › Increase head on turbines

Safer Infrastructure

- › Increase discharge capacity
- › Extreme flood protection
- › Robust and reliable

Cost Effective

- › Lower construction costs
- › Low maintenance cost
- › No operation cost

Hydroplus Inc. - 500 Harbour Place Drive - Suite 1211 - Tampa, FL 33602 - Tel: (813) 223-3081 - contact@hydroplus.com

Stanley Consultants, Inc.
Stantec Consulting Services Inc.
T.Y. Lin International
Tectonic Engineering & Surveying
Consultants P.C.
TREVIICOS
Vertical Access LLC
Vista Data Vision
WatershedGeo
Worthington Products, Inc.

Wyoming

AECOM
Amec Foster Wheeler
Applied Weather Associates, LLC
ASI Constructors, Inc.
Aubian Engineering Inc.
**Barnard Construction
Company, Inc.**
Barr Engineering Co.
BDI
Canary Systems, Inc.
CARPI USA Inc

CDM Smith
Center Rock Inc.
COH Inc.
D'Appolonia
DOWL
Dewberry
Dyrhoff Inc.
DYWIDAG Systems International
(DSI)
Earth Reinforcement Testing, Inc.
(ERTesting)
Emagineered Solutions, Inc.
FENSTERMAKER
Flo-2D Software, Inc.
Fugro Consultants Inc.
Gannett Fleming
Hayward Baker Inc.
HDR
hydroGEOPHYSICS Inc.
Hydroplus, Inc.
International Erosion Control
Systems
Kleinfelder
Lemke Industrial Machine LLC

McMahon & Mann Consulting
Engineers, P.C.
Mead & Hunt, Inc.
Mecan-Hydro
Michael Baker International
Mueser Rutledge Consulting
Engineers
OBG
Parsons Brinckerhoff
Pro-ROV Services
QSP Packers, LLC
RST Instruments Ltd.
SAGE Engineers
Schnabel Engineering, Inc.
Stanley Consultants, Inc.
Stantec Consulting Services Inc.
T.Y. Lin International
Tectonic Engineering & Surveying
Consultants P.C.
TREVIICOS
Vertical Access LLC
Vista Data Vision
WatershedGeo
Worthington Products, Inc.

Geotechnical and Civil Engineering



- Dam and Spillway Rehabilitation
- Potential Failure Modes and Risk Analyses
- Seepage and Stability Analyses
- Hydrologic and Hydraulic Evaluations
- Instrumentation and Data Collection Systems
- Dam Breach Analyses and Flood Routing Studies
- Construction Inspections and Management
- Permitting Services

D'APPOLONIA

TRADITION OF UNDERSTANDING. QUALITY SOLUTIONS.

(800) 856-9440 • dappolonia.com

Dam Ownership: Procuring the Services of a Professional Engineer



Introduction

Dams are owned and operated by individuals, private and public organizations, and the government. The responsibility for maintaining a safe dam rests with the owner. A dam failure, resulting in an uncontrolled release of the reservoir, can have a devastating effect on persons and property downstream. Additionally, a dam failure could mean loss of a vital resource to you. As a dam owner, you are liable for the water stored behind your dam. Therefore, proper operation, maintenance, repair, and rehabilitation of a dam are key elements in preventing a failure, limiting your liability, and maintaining your water resource.

Dam Maintenance and Owner Responsibility

Dam owners receive important benefits from the reservoir impounded by the dam. The responsibility owners hold for understanding the laws and regulations associated with proper dam maintenance, and the procedures for keeping the structures safe, is significant. This understanding could determine whether an owner will reap the benefits associated with responsible dam ownership or pay the costs resulting from improper dam maintenance. One of the most important procedures for ensuring proper maintenance of the dam is procuring the services of a professional engineer. This brochure is designed to answer the most commonly asked questions about hiring an engineer.

Why Do I Need an Engineer?

All dams meeting government regulatory definitions—no matter what their size or level of engineering—will deteriorate with time. Periodic inspection, proper maintenance, and occasional repair and rehabilitation are inevitable. An owner needs the expertise of an engineer to perform inspections or evaluate and undertake corrective measures at a dam. An engineer can investigate the problem and recommend a course of action which may include the design of corrective measures and the preparation of construction plans and specifications. The engineer also can assist in selecting a contractor and will provide valuable construction inspection services.



What Type of Engineer Should I Hire?

It is essential to select someone with a professional engineer (P.E.) certification, with a background in civil engineering, who is competent in the field of dam safety. Important criteria to look for in a prospective engineer include the following:

- A licensed professional engineer;
- A minimum of 10 years experience in dam design and construction;
- A knowledge of the rules and regulations governing dam design and construction in the state where the dam is located;
- Specific experience in the problem area—e.g., hydrology, hydraulics, structural or geotechnical engineering.

SELECTION STRATEGIES

How Do I Choose an Engineer who is best For My Needs?

There are three basic strategies for selecting engineering consulting services. These selection strategies are:

- Qualification-Based
- Fee-Based
- Intermediate

Qualification-Based

Qualification-Based selection means that the knowledge, experience, and ingenuity of the engineer are the determining factors in making the selection. This strategy is advantageous when the owner is uncertain about the exact problem or the best solution to the problem.

When Qualification-Based selection is used, several engineering firms submit their technical qualifications, experience with similar projects, reputation with existing clients, and any other factors pertaining to the specific project. The owner then selects the three most qualified firms to make brief presentations outlining a cost-effective and innovative approach to the problem. Based upon these presentations, the owner chooses the most qualified engineer to develop a scope of work.



When agreement on the scope of work is achieved, the engineer and the owner negotiate a price that is fair and reasonable to both parties. If an agreement cannot be reached, negotiations start with the second-ranked engineer. In this selection process, price is the main factor, but only after the most qualified engineer has been identified.



Fee-Based

Fee-Based selection means that the engineer's fee is the only determining factor in making the selection. It is advantageous when the owner knows exactly what is needed and can clearly define the scope of work before meeting with an engineer. In this case, the engineer is requested to prepare the designs and bid documents or conduct investigations as the owner specifies. This usually means getting a job done using "cookbook" solutions-with little room for innovation.

A strict Fee-Based selection often means that the engineer selected may not be qualified to do the work, especially if the bidding is open to anyone and/or the scope of work is poorly defined.

Intermediate

The Intermediate option is a cross between the Qualification-Based selection and Fee-Based selection processes. The Intermediate option requires that the owner pre-qualify engineers that are asked to submit a fee-based proposal. This process ensures a higher certainty that the work will be superior quality, but requires the owner to clearly define the scope of work. Without a clearly defined scope of work, the owner could receive a wide range of fee proposals, depending on the consulting engineer's interpretation of the project.



FOR YOUR CONSIDERATION

Request references from the engineer. Contact the references to discuss the engineer's performance. Look at projects that have been completed under the engineer's leadership. Request to review state files of projects an engineer has undertaken to see if the process went smoothly.

Maintain an open line of communication with regulatory agencies, particularly your State Dam Safety Program. Discuss an engineer's recommended course of action to verify that regulatory requirements will be satisfied.

Educate yourself in the basics of dam safety and be knowledgeable regarding the laws you must meet. Carefully consider your selection of an engineer. A little work on your part in selecting the engineer may save you money in the future.

For information on state dam safety statutes and administrative rules, contact:

- Your State Dam Safety Office
- ASDSO
- State Attorney General

Reference Materials

How to Select and Work Effectively with Consulting Engineers, American Society of Civil Engineers Manuals of Practice. No. 45, 2012

Qualification-Based Selection, American Consulting Engineer's Council, 2000

Dam Safety: An Owner's Guidance Manual, FEMA 145, August 1987

Training Aids for Dam Safety: Dam Safety Awareness, Interagency Committee on Dam Safety/U.S. Bureau of Reclamation, 1994

ASDSO's tools and downloadable guidelines are available at www.damsafety.org

Michael Baker
INTERNATIONAL



We Make a Difference



Dam Safety Services

Dam Inspections • Design Services
Hydrology & Hydraulics • Geotechnical
Structural • Environmental & Permitting
Construction Services

Chad R. Davis, P.E., Assistant Vice President
100 Airside Drive, Moon Twp., PA 15108, (412) 375-3077

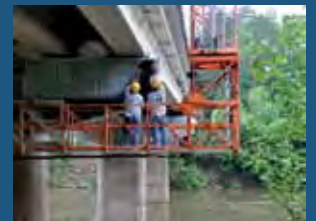
MTBAKERINTL.COM

“RESTORING & MAINTAINING OUR INFRASTRUCTURE”



We offer a full line of services, including:

- Epoxy injection for structural repair
- Polyurethane injection for non-structural water leaks
- Low-pressure mortar spray / shotcrete for surface repair
- Protective coatings to extend the usable life
- Void filling and stabilization
- Strengthening with carbon fiber, E-glass, and steel cords for structural upgrades and capacity increase
- Specialized joint systems and caulking



CONCRETE REPAIR, STRENGTHENING & WATERPROOFING

225 Buford Drive / Lawrenceville, GA 30046
(770) 682-0650 / www.er-inc.net



ENGINEERED RESTORATIONS, INC.

Worthington

Waterway Barriers



The World's Most Trusted Waterway Barrier

Worthington Products is the trusted choice in over 47 countries for solving surface debris, vegetation, public safety and fish guidance problems at dams and power plants.

We offer a full range of waterway barrier solutions supported by a global installation base, common sense engineering and an understanding of debris, fish and safety issues.

Whether you need a 30-ft boat barrier or the massive 3.5 mile long debris barrier engineered to deflect 30,000 logs per day at the Jirau Hydro Plant in Brazil, you can trust Worthington to deliver quality, performance and outstanding customer service for all of your waterway barrier needs.

Call us today or visit us online.

Call | 1.800.899.2977 Click | www.tuffboom.com

